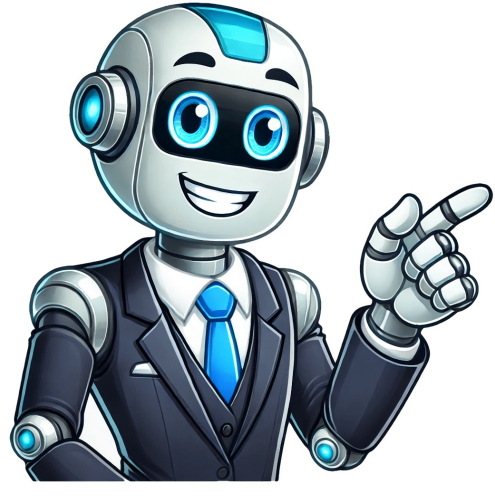


Continue





The Bishop's Nomenclature: A Window into Slavic Culture and Chess History In various Slavic languages, the term for the Bishop is diverse and captivating, offering insights into the cultural heritage and historical context of chess. The Polish "Goniec," German "Läufer," Czech "Štřelec," Croatian "Lovac," and Ukrainian "офіцер" (ofitser) all convey the piece's unique characteristics, such as its diagonal movements and long-range capabilities. These names not only reflect the Bishop's strategic importance but also draw upon military and animal imagery, underscoring its significance in chess. The use of military ranks, like "офіцер," introduces a new layer to the Slavic linguistic landscape, highlighting the piece's command and control aspects. The enduring references to the Bishop as an "Elephant" in Russian ("Слон") and Persian ("Fil") pay homage to its historical roots, symbolizing power and dignity. These varied appellations demonstrate the complex cultural interpretations surrounding the Bishop, reflecting unique strategic essences that chess continues to hold in societies worldwide. The bishop on the chessboard holds more significance than just its gameplay mechanics, as it symbolizes a vast array of historical, cultural, and philosophical concepts. The Evolution of the Chess Piece: Bishop Chess originated in India in the 6th century as chaturanga, with four pieces including elephants, horses, chariots, and foot soldiers. Over time, it spread to Persia where new rules and piece movements were introduced, including the powerful "ferz" which became the bishop. This piece moved diagonally across the board, adding complexity to the game. As chess traveled across continents, each culture left its mark on it, resulting in different names for pieces like alfil (elephant) for the bishop and tower for the rook. The bishop's significance lies in its diagonal movement, allowing it to access multiple squares in one move. It is a crucial piece that works best when used together with other pieces like rooks and queens. As the endgame nears, bishops become even more powerful, attacking over long distances but requiring strategic positioning and teamwork for optimal results. Historically, elephants were associated with the bishop piece, reflecting cultural influences. The design of the bishop has undergone changes throughout history, including a mitred head in the Medieval period, a cloaked figure with crosier in the Renaissance, and a crowned bishop with mitre and long robe in the Staunton era. The Bishop has revolutionized modern chess, introducing a standardized design that streamlined tournaments. To grasp the game's history, it's essential to understand the evolution of the Bishop piece itself. This symbolic pawn holds significant cultural and religious significance, drawing parallels with Christianity and other belief systems. The unique nuances of each culture infuse the Bishop with diverse meanings. The artistic and literary depictions of Bishops offer a wealth of insights into their symbolism. Paintings often portray them as wise, ornately dressed figures holding croziers, conveying power and spiritual guidance. Sculptures emphasize their dignity, highlighting their importance on the chessboard. Modern artworks challenge traditional notions of power and control. To appreciate the Bishop's symbolic meanings, consider the nuances of artistic depictions - clothing, expressions, or interactions with others. Explore notable bishop pieces in history by delving into famous chess games and championships. The Bishop has played a significant role in shaping the outcome of top-level matches. For instance, Anatoly Karpov skillfully maneuvered his Bishop to secure victory against Garry Kasparov in their 1984 World Chess Championship match. Judith Polgar used her Bishops to launch a successful attack on Veselin Topalov's king during their 1992 match. These examples demonstrate the strategic power of the Bishop, controlling diagonals and disrupting opponents. One notable story revolves around Akiba, whose Bishop-led tactics led to an incredible comeback. The Bishop in Chess: A Game-Changing Piece

What does the bishop represent in chess. What does the bishop chess piece look like. What does the bishop in chess look like. What do each of the chess pieces represent. Bishop chess piece meaning.