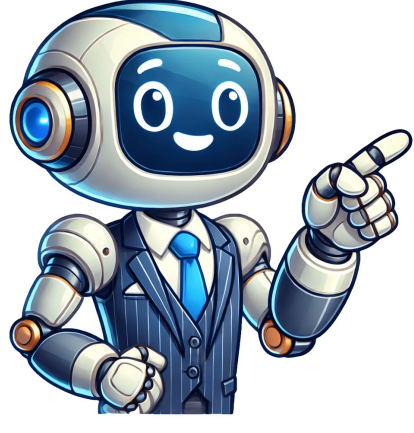


[Click Here](#)

























[illegible]

the words "NARROW BRIDGE" in black lettering. Where are Narrow Bridge Signs installed before bridges that are wide enough to accommodate two lanes of traffic, when you see a Narrow Bridge warning sign while driving, you should: • stay in your lane • watch out for oncoming traffic Test Your Knowledge of Road Signs Take a Free Road Signs Practice Test Related Road Signs Studying for Your DMV Test?Get a Pass Guarantee Test Your Knowledge of Traffic Signs Take a Road Signs Test Now Road signs play a crucial role in ensuring driver safety, managing traffic flow, and preventing accidents. For new and seasoned drivers alike, interpreting these signs correctly is essential for navigating roads effectively and responsibly. While some road signs, like those indicating sharp curves or animal crossings, might seem self-explanatory, others can be less intuitive. This guide breaks down the meaning of driving signs, their colors, and how you can master them to become a safer and more confident driver.What Are Road Signs and Why Are They Important?Road signs, also known as traffic signs, are strategically placed at the side or above roads to provide information, guide drivers, and regulate traffic. They date back to ancient times, starting as simple wooden or stone milestones for navigation. Today, they serve one primary purpose—keeping roads safe for everyone.Road signs not only help avoid accidents but also provide essential information for smooth travel, such as directions, speed limits, and construction warnings. Misinterpreting or ignoring them can lead to severe consequences, from legal penalties to life-threatening situations.Traffic signs, also known as street signs or driving signs, play a crucial role in maintaining order and safety on U.S. roads. They provide essential information about speed limits, road conditions, and driving rules. Understanding these signs is key to passing your DMV signs test and becoming a confident driver in the United States. Recognizing the difference between regulatory signs (like stop and yield signs) and guide signs (like highway exits) will help you drive safely and avoid common road violations.Key Types of Road SignsRoad signs are categorized to serve different purposes. Understanding these categories will help you respond appropriately while driving.1. Regulatory SignsThese include rules and instructions that drivers must follow, such as speed limits, stop signs, and no-entry signs. Ignoring regulatory signs can result in violations and fines.2. Warning SignsThese triangular or diamond-shaped signs alert drivers to hazards ahead, such as sharp curves, slippery roads, or animal crossings. Warning signs give you time to slow down and prepare for potential dangers.3. Guide SignsGuide signs help drivers find directions, exit highways, or locate services such as gas stations or hospitals. These are especially helpful in unfamiliar areas and during long trips.4. Informational SignsInformational signs provide insights about nearby recreational or cultural sites, making them ideal for tourists. Think of them as your road trip companion directing you to fun and educational destinations!Navigating United States road signs can be challenging, especially for new drivers or immigrants unfamiliar with American driving laws. Most DMV driving tests require knowledge of not only common road signs but also lesser-known warning and information signs. Mastering these signs ensures you can respond appropriately to different road conditions and traffic regulations.What Do Road Sign Colors Mean?The color of a road sign is critical in conveying its purpose at a glance. Here's what each color represents:Red: Indicates mandatory actions (e.g., stop, yield) or prohibitions, requiring immediate attention.Yellow: Warns drivers of potential hazards or changes in road conditions, such as "Slippery When Wet" signs.White: Often used for traffic regulations or descriptive information, including speed limits and parking rules.Orange: Marks temporary conditions due to roadwork or construction zones.Green: Provides directional or guidance information, including entrances, exits, and distance to destinations.Blue: Highlights services like gas stations, rest areas, or hospitals and also indicates evacuation routes.Brown: Points to fun places to visit! Think recreational or cultural interest areas, like parks or heritage sites.Here's a chart to easily remember!Tips for New Drivers to Master Road Sign InterpretationDriving can be overwhelming for beginners, but knowing how to read signs confidently can improve your safety and overall experience: Study and familiarize yourself with frequently used regulatory and warning signs, such as "Stop," "Yield," or speed limits. Associate each color with its meaning to make quick decisions on the road. Triangle for warnings, circles for prohibitions, and rectangles for information—knowing sign shapes can help you recognize them from a distance. Take practice driving tests or use apps to improve your road sign recognition. Traffic laws and signs occasionally change. Keeping up with local regulations ensures you're driving correctly and responsibly.Common Road Sign Mistakes and How to Avoid ThemMisunderstanding Yield Signs: Many drivers confuse yield signs with stop signs. Unlike stop signs, you only need to slow down and give the right of way when it's safe to proceed at a yield sign.Ignoring No Turn on Red Signs: Drivers often overlook no turn on red signs, which can result in traffic violations. Always check for posted signs before turning on red.Not Recognizing Construction Signs: Temporary orange construction signs require drivers to reduce speed and be cautious. Failing to follow these signs can lead to fines or accidents.Confusing Speed Limit and Minimum Speed Signs: Speed limit signs indicate the maximum speed allowed, while minimum speed signs require drivers to maintain a certain speed unless road conditions make it unsafe.Misreading Guide Signs: Green guide signs provide directional information. Misreading them can lead to missed exits or wrong turns.Why Accurate and Visible Road Signs MatterOutdated, faded, or improperly maintained road signs can pose significant risks to drivers. Regularly updating signs ensures their accuracy and visibility, especially in high-traffic areas or regions prone to severe weather conditions. For example, a missing "Stop" sign at an intersection can lead to accidents. Municipalities and road authorities continuously work to maintain and inspect signs to keep roads safe.Legal Implications of Ignoring Road SignsFailing to obey road signs can lead to hefty legal penalties, ranging from fines to license suspension. More importantly, ignoring signs jeopardizes not only your safety but also the safety of other road users. Understanding and following these signs is a shared responsibility for everyone on the road.How Road Signs Evolved Over TimeThe evolution of road signs is a story of adaptation and innovation. From ancient Roman milestones to modern digital signboards, road signs have come a long way. Innovations like reflective aluminum for nighttime visibility or electronic displays that change in real-time highlight how far we've come to prioritize road safety.Today, emerging technologies, like smart traffic systems, continue to improve signage by adapting to dynamic traffic conditions or providing real-time updates on accidents and road closures.International Standardization of Road SignsThanks to conventions like the Vienna Convention on Road Signs and Signals, many countries have worked toward standardizing traffic signs to ensure clarity across language barriers. This international effort means that even when driving abroad, you'll find many similarities in signage, making it easier to adapt to new driving environments.For instance, pictorial signs are widely used to replace text-based instructions. Symbols like pedestrians for crosswalks, flashing lights for rail crossings, or chevrons for sharp curves are globally recognized, enhancing road safety and understanding.Okay so now that we've got that out of the way, let's see if you can remember the following signs. Ready? First look at the images and then scroll down to see if you got the name or concept right. Let's start easy.Now let's increase the level of difficulty!How many did you get right? If you didn't remember some of them don't worry, that's why this post was created, to remind you what they mean and the next time you're out on the road you can be sure you know what they mean. You've got this!If you want to know more about the subject, we recommend reading the driver's manual of your state. Click on the name of your State to visit the manuals:Texas (P.31-37)Illinois (P. 64-75)Arizona (P. 32-40) Protect Yourself with OCHO InsuranceWhether you're a new driver or a seasoned one, staying informed is key. Master the art of road signs and hit the road with confidence—and don't forget to stay protected with reliable auto insurance. Protect yourself and your vehicle with OCHO's affordable auto insurance plans. From learning how to parallel park to how to change a tire, we've got you covered. With options like \$0 down payment for qualifying drivers, we're here to make insurance simple and stress-free. You can find us in these states: AZ, GA, IL, MO, NM, TX, WA, WI. Type: regulatory sign Color: black and white Shape: rectangle Location: At the side of the road. Do Not Pass signs are posted before stretches of road where it's illegal to pass. What does a Do Not Pass sign mean? A Do Not Pass sign tells drivers where passing is not permitted. The sign indicates that drivers must not overtake other vehicles in the area, regardless of how safe they may feel it is to do so. Do Not Pass signs are installed on unsafe stretches of road to protect drivers from hazards such as hidden driveways, intersections, hills and curves, and make passing in those areas illegal. Do Not Pass signs work in conjunction with No-Passing Zone signs, which mark the beginning of an area where drivers cannot pass. A Do Not Pass sign, along with pavement markings, indicates that drivers must stay on the right side of the road and not pass other vehicles. What type of sign is a Do Not Pass sign? A Do Not Pass sign is a regulatory sign (it tells drivers not to do something). What color(s) is the Do Not Pass sign? The Do Not Pass sign is black and white (white background with a black border and lettering). What shape are Do Not Pass road signs? Do Not Pass signs are in the shape of a rectangle with longer vertical sides, and have the words DO NOT PASS printed in the center. Where are Do Not Pass signs commonly placed? DO NOT PASS signs are installed before stretches of road where passing is not permitted. When you see a Do Not Pass Sign while driving: • stay on the right side of the road • do NOT pass other vehicles, regardless of how safe you may feel it is to do so. Passing in this area is illegal Test Your Knowledge of Road Signs Take a Free Road Signs Practice Test Related Road Signs Studying for Your DMV Test?Get a Pass Guarantee Test Your Knowledge of Traffic Signs Take a Road Signs Test Now Share — copy and redistribute the material in any medium or format for any purpose, even commercially. Adapt — remix, transform, and build upon the material for any purpose, even commercially. The licensor cannot revoke these freedoms as long as you follow the license terms. Attribution — You must give appropriate credit , provide a link to the license, and indicate if changes were made . You may do so in any reasonable manner, but not in any way that suggests the licensor endorses you or your use. ShareAlike — If you remix, transform, or build upon the material, you must distribute your contributions under the same license as the original. No additional restrictions — You may not apply legal terms or technological measures that legally restrict others from doing anything the license permits. You do not have to comply with the license for elements of the material in the public domain or where your use is permitted by an applicable exception or limitation . No warranties are given. The license may not give you all of the permissions necessary for your intended use. For example, other rights such as publicity, privacy, or moral rights may limit how you use the material. Roadway signs in the United States come in different colors: red is only used on stop, yield and prohibition signs. Regulatory signs always have white background, and yellow is used to convey a general warning message. Green signs refer to permitted traffic direction or movement, and fluorescent yellow or green is reserved for pedestrian crossings and school zones. Coral can be found on incident management signs, brown guides you to public recreation or cultural interest sites, orange road signs are used for warning and guidance in roadway work zones, and blue signs guide you to road user services, tourist info or evacuation routes. Standards for the design and application of the signs shown here are outlined in the Manual on Uniform Traffic Control Devices (MUTCD).Stop signs are designed to let drivers know that they must come to a complete stop. Discover the stop sign definition, shape, dimensions, and more.The yield sign is a regulatory sign. At a yield sign, drivers must slow down and yield the right-of-way to pedestrians and vehicles that are ...Railroad crossing signs alert drivers of train tracks ahead. Learn more about the shape, location, and more.Speed limit signs set a maximum speed that vehicles must travel. Learn more about the definition, shape, location, and more.No left turn signs indicate a road that should not be turned into. Learn more about the definition, shape, location, and more.Do not enter signs inform drivers of roads that shouldn't be entered, usually due to oncoming traffic. Learn more about the definition, location, and more.A one way sign indicates a road with traffic traveling in a single direction. Learn more about the definition, location, and more.Men at work signs indicate that there is road work ahead and drivers may need to yield to pedestrian workers. Learn more about the definition, location, and more.Keep right signs indicate there is an obstacle ahead and the driver should keep right. Learn more about the definition, location, and more.