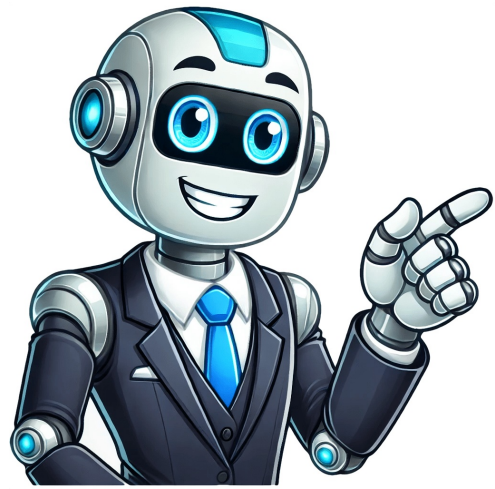


Continue



























View the manual for the Siemens iQ500 WM14T5G1 here, for free. This manual comes under the category washing machines and has been rated by 77 people with an average of a 8.2. This manual is available in the following languages: English. Do you have a question about the Siemens iQ500 WM14T5G1 or do you need help?Ask your question hereen Instruction Manual and Installation InstructionsContentsen Instruction Manual and Installation Instructions\* Familiarising yourself with your applianceFamiliarising yourself with your applianceWashing machineControlsInformation on the display panelIndicatorCause/remedyNotesFaults and what to do about them.Below you will find the product specifications and the manual specifications of the Siemens iQ500 WM14T5G1.The Siemens iQ500 WM14T5G1 washing machine is a freestanding appliance with a built-in LED display. It offers both rotary and touch controls for easy operation. The door hinge is located on the left side for convenient access. With a rated capacity of 8 kg, this washing machine is suitable for medium-sized laundry loads. This washing machine boasts an energy efficiency class of A+++, indicating that it is highly energy-efficient. It has an annual energy consumption of 137 kWh for washing, making it a cost-effective choice for users. Additionally, it features a half-load option, allowing for smaller loads to be washed with reduced energy consumption. The energy consumption per wash cycle is relatively low, at 0.74 kWh. When not in use, the power consumption in standby mode is 0.43 W, and when completely powered off, it consumes only 0.12 W. These low power consumption levels contribute to energy savings and reduced electricity costs. For water usage, this Siemens washing machine has an annual water consumption of 9900 L. This quantity of water is efficiently utilized to ensure effective cleaning while minimizing wastage. Overall, the Siemens iQ500 WM14T5G1 washing machine combines efficient performance with user-friendly controls and a spacious capacity. It is a reliable and durable appliance, designed to deliver excellent washing results while minimizing energy and water consumption.Appliance placement FreestandingAnnual energy consumption washing 137 kWhRemaining time indication YesBrandSiemensModeliQ500 WM14T5G1 | WM14T5G1Productwashing machineEAN4242003801468LanguageEnglishFiletypeInstallation Guide (PDF)Appliance placement FreestandingLoading type Front-loadProduct color WhiteBuilt-in display YesDisplay type LEDControl type Rotary, TouchDoor hinge LeftViewing window YesWater fill ColdDrum volume 63 LDoor opening angle 171 °Cord length 1.6 mCertification CE, VDEtub material PlasticDrum capacity 8 kgHalf-load YesMaximum spin speed 1400 RPMSpin-drying class BNumber of washing programs -Residual moisture 53 %Adjustable temperature YesAdjustable spin speed YesCycle time (max) 210 minAquaStop function YesDelayed start timer YesNoise level (spin) 72 dBNoise level (wash) 48 dB Lingerie, Hygiene/anti-allergy, Black, Blouse/shirt, Cold, Cotton, Easy care, Eco, Hand/wool, Hand, Wool, Jeans/denim, Mix, Pillow, Quick, Sport, Delicate/silkCycle time (quick washing program) 15 minAdd garment (pause) function YesRinse hold YesDelay start (max) 24 hFoam control system YesEasy iron function YesLoad balancing system YesStain remover option Yes A+++Energy consumption washing per cycle 0.74 kWhPower consumption (standby) 0.43 WPower consumption (off) 0.12 WConnected load 2300 WAC input voltage 220 - 240 VAC input frequency 50 HzCurrent 10 AAnnual energy consumption washing 137 kWhAnnual water consumption washing 9900 LWashing class ADoor diameter 320 mmHeight 848 mmInstallation compartment height 850 mmWidth 598 mmDepth 590 mmDepth with door open 1063 mmWeight 71200 gRemaining time indication YesChild lock YesAdjustable feet YesFeet adjustment 12 mm show moreCan't find the answer to your question in the manual? You may find the answer to your question in the FAQs about the Siemens iQ500 WM14T5G1 below.Yes, it has a half-load function. This means that users can save energy and water when washing smaller loads.Please ensure that the power cord is properly plugged into a functioning electrical outlet. Also, check if the door is securely closed, as the machine will not start if the door is ajar.Make sure that both the water supply valves are fully open. Additionally, check the water inlet hose for any kinks or blockages that may be impeding the flow of water.Inspect if the washing machine is level and adjust the feet accordingly to ensure stability. Uneven loads can also cause imbalance, so redistribute the garments evenly inside the drum before starting the wash.Error codes indicate specific issues, such as a blocked pump, unbalanced load, or water inlet failure. Try resetting the machine by turning it off, waiting for a few minutes, and then turning it back on. If the error persists, consult the troubleshooting section of the manual for guidance.Remove the dispenser tray from the washing machine, gently detach any components, and rinse them under warm water. Use a soft brush or cloth to clean any residue or build-up. Ensure everything is thoroughly dry before reassembling and reinserting the tray.Yes, it has a built-in LED display. This allows users to easily see and select their desired settings.Yes, it has an energy efficiency class of A+++, which is the highest rating. This means it is very energy efficient and can help users save on their electricity bills.Yes, it has a viewing window. Users can easily see inside the machine and check on their laundry without opening the door.It consumes 9900 liters of water annually for washing. This is a relatively low water consumption compared to other washing machines on the market.The Siemens iQ500 WM14T5G1 has a weight of 71200 g.The Siemens iQ500 WM14T5G1 has a height of 848 mm.The Siemens iQ500 WM14T5G1 has a width of 598 mm.The Siemens iQ500 WM14T5G1 has a depth of 590 mm.The washing label of your garment shows the recommended washing temperature.Unpleasant odours can be avoided by occasionally washing at 60 degrees and using the recommended amount of detergent per wash.It is not necessary to use an anti-scaling agent. Scale deposits can be prevented by limiting washing at high temperatures and using the recommended amount of detergent per wash.The Siemens iQ500 WM14T5G1 has the following certifications: CE, VDE.Yes, the manual of the Siemens iQ500 WM14T5G1 is available in English .Is your question not listed? Ask your question here The "key symbol" appears on the display when the child lock is activated. In this status the washing machine won't start. When your Siemens washing machine has detected a problem, it will display an error code or flash a symbol or light. It can be difficult to make send of these error codes, symbols and lights. Please find below a list of the most common ones, what they mean and how to resolve them. If you can't find the error code you are looking for here, please contact Siemens Home Appliances Service: contact Siemens Home Appliances ServiceThe Siemens Service team will be able to assist you further.