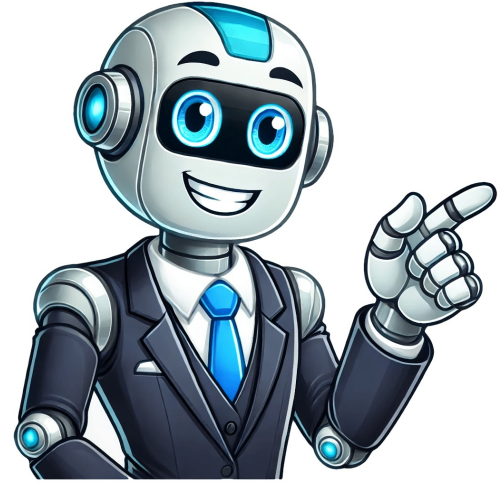


Continue



Decision tree excel add in

What can I do if I see the error message “Cannot empty the Clipboard”? Once your decision tree is complete, PrecisionTree's decision analysis creates a full statistics report on the best decision to make and its comparison with alternative decisions. You agree on termination of this license to destroy all copies of the Software and related explanatory materials in your possession. Volume Licenses For a volume purchase of Standard Pro Licenses or Student Licenses for a specified group of individual users, the primary purchaser may duplicate and distribute the corresponding version of the Software to those licensed users by storage media, secure network, secure web site, or email attachment. General Provisions This written license agreement is the exclusive agreement between you and us concerning the Software and related explanatory materials and supersedes any prior purchase order, communication, advertising or representation concerning the Software. ©RISK allows you to quantify the uncertainty in any spreadsheet model using probability distribution functions. Our refund policy is consistent with that of our order-processing service. If so, you need PrecisionTree's sensitivity analysis options. To avoid confusion, the purchaser is the point of contact with TreePlan Software for volume purchases. Back to top Copyright The web pages and the TreePlan, Sensit, and SimVoi add-ins, user guides, and example workbooks are Copyright © 2025 Michael Rory Middleton dba TreePlan Software. Our entire liability and your exclusive remedy for breach of the foregoing warranty shall be, at our option, to either return the price you paid or replace the Software file that does not meet the foregoing warranty. Reference Nodes Reference nodes can be used to reference a sub-tree. “Use” of the Software means the use of any of the Software functions to define, solve, analyze, or obtain results for a user-defined model. Mike is the author of four editions of the book Data Analysis Using Microsoft Excel. TreePlan decision tree add-in TreePlan-212-Guide.pdf TreePlan-212-Example.xlsx Sensit sensitivity analysis and tornado chart add-in Sensit-161-Guide.pdf Sensit-161-Example.xlsx SimVoi Monte Carlo simulation and value-of-information add-in SimVoi-311-Guide.pdf SimVoi-311-Example.xlsx Installation (and how to uninstall) How-To-Install-Mac-Excel-Addin How-To-Install-Windows-Excel-Addin To buy a license with a risk-free 30-day money-back guarantee, browse to the product page for TreePlan, Sensit, SimVoi, or Toolkits. PrecisionTree Pro PrecisionTree comes in both a Standard and Professional version. You may terminate it at any time by destroying all copies of the Software and related explanatory materials in your possession. Installing TreePlan on a Mac computer, the error message “Microsoft Excel cannot access the file TreePlan” is displayed. After you load the add-in XLAM file, if the menu item does not appear in the Add-Ins ribbon and the add-in does not respond to the shortcut key, quit Excel. Reports generated by this analysis include one-way sensitivity graphs, tornado diagrams and spider graphs. (TreePlan does not require a password.) (b) Or, to avoid these messages, instead of installing TreePlan via Tools > Excel Add-ins, run TreePlan via File > Open. The licensee, “You” or “Your,” means the individual person or a single organizational entity that is being licensed to use the Software. Using decision trees and influence diagrams lets you detail all of your possible options and identify the best decision to make. If necessary, we may divulge your information for reasons related to net abuse, collection of money owed us, or compliance with law. Each branch has a value of 0, since there are no additional costs incurred or payments received based on the test results. The licensor, “TreePlan Software” or “We” or “Us” or “Our,” means Mike Middleton or Michael R. No employee, agent, dealer, reseller, or distributor doing business is authorized to modify this limited warranty nor to make any additional warranties. It was developed by Professor Michael R. You will be able to download the software ZIP file several minutes after you complete the purchase. To do so, select an adjacent cell, e.g., above or below, and then use an arrow key to select the cell containing the node shape. Option+Command+I For TreePlan versions 2.06 or earlier with Windows Excel 365 versions 1906 or later, what should I do if I select a node, run TreePlan, and Excel immediately crashes? All Rights Reserved All products mentioned in this site are trademarks of their respective owners Prices are subject to change without notice dmckcgrfm If you have a question and you cannot find an answer here, send e-mail to Mike Middleton. For those who need more sophisticated sensitivity analyses, PrecisionTree links directly to TopRank, Palisade Corporation's What-If Analysis Add-in. Or, you can browse to Update history for Office for Mac, and in the “Release history for Office for Mac” section, download the Excel 16.61.1 update package. Point-and-click and easily create a decision tree diagram in your Excel worksheet with automatic formulas for solution. The stop value must be greater than or equal to the maximum value of the data range. Both methods use symbols, or nodes, and lines connecting them. Before you install a pre-16.62 version of Excel, run Excel, from the topmost Excel menu bar choose Help > Check for Updates, and uncheck “Automatically keep Microsoft Apps up to date.” If you used Excel 16.61.1 or an earlier version in the past, and if you have been using Time Machine, you can revert to that version by moving the “Microsoft Excel.app” file from Time Machine to your Applications folder. With one click, PrecisionTree will run a powerful decision analysis on your model, determining the best way to proceed with your decision. For more information about privacy and security policies, please consult the web site of our order-processing service. (b) TreePlan may not be able to detect selection of a node on some computers with a specific combination of display resolution and zoom setting. Enter probabilities and payoffs directly in cells in your tree. To the extent permitted by applicable law, the foregoing limited warranty is in lieu of all other warranties or conditions, express or implied, and we disclaim any and all implied warranties or conditions, including any implied warranty of title, non-infringement, merchantability or fitness for a particular purpose, regardless of whether we know or had reason to know of your particular needs. Installation is simple but is not automated. In Windows File Explorer, right-click the ZIP file and choose Extract All. TreePlan 2.12 also works on all current versions of Excel for Mac except versions 16.62, 16.63, and 16.63.1. To check your Mac Excel version, from Excel's topmost menu bar, choose Excel > About Microsoft Excel Sensit and SimVoi work on all current versions of Excel for Windows and Excel for Mac, except that Excel for Mac 16.79 shows a run-time error when you try to run SimVoi. How do I uninstall TreePlan? After you download the compressed ZIP file, right-click (Windows) or double-click (Mac) the ZIP file to extract the XLAM add-in(s) and other files. Take any model you have analyzed in PrecisionTree and then use @RISK to perform a powerful Risk Analysis. If you are trying to install TreePlan on a Mac computer running Excel for Mac version 16.62 or 16.63, you may encounter error messages like “Microsoft Excel cannot access the file TreePlan.” TreePlan 2.12 is not compatible with Excel 16.62 or 16.63, but TreePlan 2.12 does work fine on Excel 16.61.1 and most earlier versions. One-Way Strategy Region graphs display the expected values for each decision over the range of one variable. Your license confers no title or ownership in the Software and should not be construed as a sale of any right in the Software. Sublicensing You may not sublicense, rent, lease, or lend any portion of the Software and related explanatory written and electronic materials. Reports generated by this analysis include two-way sensitivity graphs and Strategy Region graphs (PrecisionTree Pro only). How can I learn about the features of the software? The simplest method is to launch Excel first and then use Excel's File Open command to load the TreePlan XLAM file. The sub-tree can be on any sheet in the workbook. Add @RISK probability distribution functions right in your existing decision tree. See the sixth item of the “important first steps” at Install Q&A above on this webpage. If you do, TreePlan will not be able to keep track of the location of nodes (squares, circles, and triangles). PrecisionTree determines the best decision to make at each decision node and marks the branch for that decision TRUE. Middleton dba TreePlan Software, a sole proprietorship, located at 2105 Buellman Street, #1, San Francisco, CA 94115 USA. Sensitivity Analysis Have you ever wondered which variables matter most in your decision? In Mac, double-click the ZIP file. Back to top Privacy Policy We respect your right to privacy and will hold your private information in confidence. Then choose Decision Tree (or press the shortcut key). For each branch in the tree there is a label, value, and if necessary, a probability. Why does TreePlan not respond (or why does TreePlan show the wrong dialog box) when I select a node and choose Decision Tree (or press the shortcut key)? See the Important Information Displayed in Your Decision Tree With PrecisionTree. You'll see the payoff and probability of each possible path through a tree. For more information, see In Windows Excel 2013-2016-2021-365, if the Add-Ins ribbon is not shown automatically the first time when the add-in is loaded, close all workbooks, quit Excel, and restart Excel to display the Add-Ins ribbon. Are the add-ins compatible with my computer? Node types offered by PrecisionTree include: Chance nodes Decision nodes End nodes Logic nodes Reference nodes You can add PrecisionTree functions to any cell in a spreadsheet and can include arguments that are cell references and expressions - allowing great flexibility in defining decision models Enter a Decision Tree Directly In Your Spreadsheet In PrecisionTree, decision trees and influence diagrams are created directly in your spreadsheet. A diamond indicates a reference node. Update November 15, 2023The current TreePlan version 222 works on all current versions of Excel for Windows. Gas and oil companies use PrecisionTree to make the best decisions when developing an oil field. Decision Analysis Decision Analysis is a process that allows you to examine decisions in a structured and efficient manner. Two-Way Strategy Region graphs show you which decision is optimal over the range of two variables. Download Decision Analysis Files Except where noted below, the following PDF files are selected chapters from an unpublished manuscript, Decision Analysis Using Microsoft Excel, by Michael R. The PrecisionTree system provides all the necessary tools for setting up and analyzing decision trees and influence diagrams. Advanced Features PrecisionTree includes many advanced analysis options: Logic Nodes Logic nodes are a special type of node where the optimum branch is selected according to conditions the user defines. For more information, see In Windows Excel 2019 & 2021 & 365, what is the shortcut key to run Sensit? Run Excel. For continuous-valued data, a better histogram has a horizontal axis with numerical labels aligned under the tick marks between the bars as shown below. We pronounce “SimVoi” to rhyme with “Enjoy” with a slight emphasis on the first syllable. PrecisionTree and @RISK – Perform Risk Analysis on Your Decision Trees @RISK, Palisade Corporation's Risk Analysis and Simulation Add-In, is a perfect companion to PrecisionTree. To download the ZIP file containing the XLAM add-in for automatically creating a Better Histogram from data on an Excel worksheet, click Better-Histogram-Addin-20190718.zip After you download the ZIP file, extract the files. You further acknowledge that title and full ownership rights to the Software will remain the exclusive property of TreePlan Software and that you will not acquire any rights to the Software except as expressly set forth in this license. Education Ph.D., Stanford University, Graduate School of Business, Operations & Systems Analysis M.S., Stanford University, School of Engineering, Operations Research M.B.A., University of Iowa, Business B.S., Iowa State University, Electrical Engineering Nancy Padgett provides assistance in business operations, copy editing, and customer relations for TreePlan Software. Decision Analysis uses powerful analytical techniques developed at Stanford, Harvard and other universities over the past thirty years. PrecisionTree helps address complex, sequential decisions by visually mapping out, organizing, and analyzing decisions using decision trees - right in Microsoft Excel. Then move or delete the SimVoi XLAM file. Accessibility You may not place the Software onto a server so that it is accessible via a public network such as the Internet. Termination This license agreement takes effect upon your use of the Software and remains effective until terminated. The labels of a Column chart are aligned under the center of each vertical bar, and there is no Excel feature for changing that alignment. If you are using TreePlan on a Windows computer, start Excel, choose File > Options > Trust Center > Trust Center Settings > Macro Settings, select the option “Disable VBA macros with notification”, check the box “Enable Excel 4.0 macros when VBA macros are enabled”, click OK twice, quit Excel, and restart Excel before running TreePlan. Our order-processing service uses encryption to protect your credit card number and other details, and we do not see your credit card number. How do you pronounce “SimVoi”? TreePlan and Decision Trees Sensit and Sensitivity Analysis SimVoi and Monte Carlo Simulation Back to top Download Better Histogram Add-In For Mac Excel 2016-2019-365 and Windows Excel 2010-2013-2016-2019-365 A histogram in Excel is usually a Column chart type. Confidentiality The Software contains trade secrets and proprietary know-how that belong to us and it is being made available to you in strict confidence. His first decision analysis software project was completed in 1972 while he was a Ph.D. student at Stanford University, and he developed the first version of the TreePlan decision tree add-in for Excel in 1992. When I run TreePlan on Mac Excel, the text and buttons on the dialog boxes are scrunched together and overlap, or TreePlan does not allow me to modify the decision tree. After one year you may continue to use the Software, but if you need support or updates you will need to buy a new Standard Pro License. TreePlan version 2.12 also works on all current versions of Excel for Windows except version 2206. We may occasionally use your information to contact you regarding new versions of our products. The results of many one-way analyses can be compared on the same tornado diagrams and spider graphs. But, using VBA custom functions, you can easily construct your own custom utility function. Custom Utility Functions PrecisionTree offers a default exponential utility function. The name of this node derives from the fact that the pre-set conditions are usually phrased in a logic statement (using expressions such as “less than”, “equal to”, etc.). TreePlan helps you build a decision tree diagram in an Excel worksheet. ... TreePlan is an Excel add-in that allows you to build decision trees in Excel. Limited Warranty We warrant that for a period of 30 days after delivery of this copy of the Software to you the Software will perform in substantial accordance with the related explanatory materials. Definitions The software product, “Software,” means the standard Pro, or Student version of TreePlan, Sensit, or SimVoi, including the Excel add-in files, associated example files, and electronic documentation files, and also any updates or modifications of the foregoing provided by TreePlan Software. Either wait for a Microsoft update, or revert to Excel for Mac 16.78.3 How can I purchase add-ins? Influence diagrams quickly define the general structure of a decision model. The add-in automates the original manual method for creating a Better Histogram, described in detail in a PDF file included in the download ZIP file. Standard Pro License Upon purchase or receipt of a Standard Pro license, you may install and use the Standard Pro version of the Software for single individual use on multiple computers, or you may install the Standard Pro version on a single computer for shared use, but not both. In July 2016 Microsoft released a security update which may affect downloaded XLA and XLAM add-in files with Windows Excel. Middleton at the University of San Francisco and modified for use at Fuqua ... Each end node lists the payoff and probability for each path through the tree. If Sensit has been installed so that it appears in the Excel Add-ins Available dialog box, uncheck the Sensit item and quit Excel. For a volume purchase of Standard Pro Licenses or Student Licenses for shared use on a group of computers, each computer must have its own license, regardless of whether the Software is used at different times or concurrently. If you were using a previous version of the add-in, quit Excel and delete the old version of the XLA or XLAM file from your computer. Take real-world data and use BestFit to find the distribution which best fits your data, or create your own distribution by drawing it in RISKView. What if I purchased multiple licenses? The same spreadsheet model, three powerful analyses -- all with the DecisionTools Suite. The next time you run Excel, respond to the prompts about Excel not being able to find SimVoi. The start, step, and stop values must be chosen so that there are at least two intervals. If you have made a volume purchase, you may duplicate and distribute the downloaded file to the users covered by your licenses. For some workarounds, see our web page TreePlan Limit of Five Branches per Node. For information specific to a single add-in, see the TreePlan Q & A, Sensit Q & A, or SimVoi Q & A section. The next time you run Excel, respond to the prompts about Excel not being able to find TreePlan. All other trademarks are property of their respective owners. We remain the sole owner of all rights, title, and interest in the Software and related explanatory written and electronic materials. Then move or delete the add-in XLAM file. For any method of distribution, the Software must be accessible only to people who have a Standard Pro License or Student license. Click a link for information related to TreePlan, Sensit, and SimVoi. If you are trying to install TreePlan on a Windows computer running Excel for Windows version 2206, you can revert to an earlier version of Office for Windows by following the recommended steps at How to revert to an earlier version of Office. You agree that the Software will not be shipped, transferred or exported into any country or used in any manner prohibited by the United States Export Administration Act or any other export laws, restrictions or regulations. Back to top License Agreement with Terms and Conditions Introduction Carefully read the following license agreement. This powerful feature combines the strength of a decision tree for describing decision situations with the strength of a traditional spreadsheet model for calculating results. Copyright The Software is protected by United States copyright laws and international treaty provisions. Current policy (2024 and later) for the Standard Pro License is that you may use the Software indefinitely and you receive email support and updates at your request for one year from date of purchase. The next time you run Excel, respond to the prompts about Excel not being able to find Sensit. End node values can be calculated by a detailed spreadsheet model. The step value must be greater than zero. Back to top TreePlan-Specific Questions and Answers This section has information specifically for the TreePlan decision tree add-in. To show the Better Histogram dialog box: In Windows Excel 2010 & 2013 & 2016 & 2019 & 365, choose Add-Ins ribbon > (Menu Commands section) Better Histogram, or press the shortcut key Control+Shift+B. A logic node behaves like a decision node, but it selects the branch whose logic formula evaluates to TRUE as the logical (optimum) decision. In the example at the right, the Drill Decision subtree is referenced by the Test/No Structure path. Back to top Form W-9 TreePlan®, Sensit®, and SimVoi® For Mac Excel 2016-2019-2021-365 and Windows Excel 2010-2013-2016-2019-2021-365 To evaluate our add-ins, please download and examine the PDF Guide file and the XLSX Example file. Install Questions and Answers What are important first steps for using the software? In this example, the payoff returned depends on the cost of testing, the cost of drilling and the amount of oil found. Some states do not allow the limitation or exclusion of liability for incidental or consequential damages, so the above limitation may not apply to you. Then launch Excel, and use Excel's File > Open to load the XLAM file, or follow the instructions for installation. To do so, select an adjacent cell, and use the keyboard arrow keys to move the selection to the cell containing the node; then run TreePlan. Then move or delete the Sensit XLAM file. License Transfer You may not sublicense, sell, lease, rent, assign or otherwise transfer the license rights granted herein without the prior written consent of TreePlan Software. Control-Shift+T What is the shortcut key to run TreePlan on Mac Excel 2019 & 2021 & 365? (b) For a permanent solution, use TreePlan 2.07 or later. If TreePlan has been installed so that it appears in the Excel Add-ins Available dialog box, uncheck the TreePlan item and quit Excel. During 1977-2008 he was a full-time Professor in the School of Management, University of San Francisco, where he taught undergraduate, M.B.A., and Executive M.B.A. courses in decision modeling and data analysis. Backup Copy You may copy the Software for backup and archival purposes, provided that the original and each copy is kept in your possession and it is not available to others. Use Excel's File > Open command to load the XLAM add-in file. Build decision trees and influence diagrams directly in your spreadsheet! Create diagrams easily by selecting cells in your spreadsheet and clicking node buttons at the PrecisionTree toolbar. No matter what industry, PrecisionTree can work for you. Back to top Questions and Answers for All Add-Ins This section has information related to all of our add-ins. Read the Policy We will provide a request for a quantity discount is shown in a table on each product page of this website. A workaround is to select the cell containing the node shape instead of selecting the node shape itself. With this information, @RISK can run a complete Monte Carlo simulation of your decision tree, showing you the range of possible results that could occur. For the Test chance node, for example, there are three possible results: No Structure, Open Structure or Closed Structure. Risk Profile A decision analysis in PrecisionTree generates a Risk Profile. Control-Shift+V In Mac Excel 2019 & 2021 & 365, what is the shortcut key to run SimVoi? The example at the right shows square decision nodes, round chance nodes and triangular end nodes. How do I uninstall an add-in? Any use or disclosure of the Software, or of its algorithms, protocols or interfaces, other than in strict accordance with this license agreement, may be actionable as a violation of our trade secret rights. Control-Shift+P for Sensit Plot (one input, one output) Control+Shift+S for Sensit Tornado-Spider (many inputs, one output) In Mac Excel 2019 & 2021 & 365, what is the shortcut key to run Sensit? See the discussion on our web page Clipboard-Cannot-Be-Emptied-Error. Then run a full Monte Carlo simulation on your Decision Analysis model! You'll have a distribution of possible results, along with the likelihood of them occurring, for the optimal decision identified by PrecisionTree. In Windows Excel 2019 & 2021 & 365, what is the shortcut key to run SimVoi? If SimVoi has been installed so that it appears in the Excel Add-ins Available dialog box, uncheck the SimVoi item and quit Excel. Sensit-Specific Questions and Answers This section has information specifically for the Sensit add-in for sensitivity analysis and tornado charts. Refund Questions and Answers How can I get a refund? This is a contract. Right-click the XLAM file, and choose Properties > General. Businesses use PrecisionTree to make decisions on introducing new products, factoring in decisions at each stage of marketing and production. Include your version of Excel and details about what you have done (keystrokes and mouse-clicks) and what happens or doesn't happen. Modifications You may not modify or adapt the Software or create derivative works. What is a fast way to start using the software? Refer to the extracted File for detailed installation instructions. About TreePlan Software TreePlan is a San Francisco-based company providing decision analysis add-ins for Excel. TreePlan® for decision trees, Sensit® for sensitivity analysis, and SimVoi® for Monte Carlo simulation. The PrecisionTree system provides all the necessary tools for setting up and analyzing decision trees and influence diagrams. For software details and tutorial, refer to the Guide PDF file(s) extracted from the ZIP file. Then, at the click of a button, @RISK performs a Monte Carlo simulation of your model, analyzing every possible outcome and graphically illustrating the risks you face. When you purchase one of our products via our order-processing service, we receive your name, email and physical address, the payment method used (e.g., Visa, MasterCard, etc.), your phone number, and the date and time of the order. The probability of each outcome occurring is 41%, 35% and 24% respectively. Before you use the Better Histogram add-in, use Excel's MIN and MAX worksheet functions to determine the minimum and maximum values of your data values so that you can decide on “nice” intervals for your histogram. To download a PDF or XLSX file, click a link shown below. Back to top Trademarks TreePlan, Sensit, SimVoi, and TreePlan Software are trademarks or registered trademarks of Michael Rory Middleton dba TreePlan Software. Then move or delete the TreePlan XLAM file. Toolkits: Discount Bundles of Decision Tree, Tornado Chart, and Monte Carlo Simulation Add-ins for Excel For Mac Excel 2019-2021-2024-365 and Windows Excel 2019-2021-2024-365 TreePlan is a decision tree add-in for Windows Excel 2010 & 2013 & 2016 & 2019 & 365 and Mac Excel 2016 & 2019 & 365. You acknowledge that no title to the intellectual property in the Software is transferred to you by the license. Upon purchase or receipt of a Student License, you may install and use the Student License version of the Software for single individual use on multiple computers, or you may install the Student License version on a single computer for shared use, but not both. Option+Command+P for Sensit Plot (one input, one output) Option+Command+S for Sensit Tornado-Spider (many inputs, one output) How do I uninstall Sensit? After you enter a quantity on the secure order form, the same price will be used by the order form. After the add-in ribbon will be displayed each time you start Excel. Pricing for a quantity discount is shown in a table on each product page of this website. A workaround is to select the cell containing the node shape instead of selecting the node shape itself. With this information, @RISK can run a complete Monte Carlo simulation of your decision tree, showing you the range of possible results that could occur. For the Test chance node, for example, there are three possible results: No Structure, Open Structure or Closed Structure. Risk Profile A decision analysis in PrecisionTree generates a Risk Profile. Control-Shift+V In Mac Excel 2019 & 2021 & 365, what is the shortcut key to run SimVoi? The example at the right shows square decision nodes, round chance nodes and triangular end nodes. How do I uninstall an add-in? Any use or disclosure of the Software, or of its algorithms, protocols or interfaces, other than in strict accordance with this license agreement, may be actionable as a violation of our trade secret rights. Control-Shift+P for Sensit Plot (one input, one output) Control+Shift+S for Sensit Tornado-Spider (many inputs, one output) In Mac Excel 2019 & 2021 & 365, what is the shortcut key to run Sensit? See the discussion on our web page Clipboard-Cannot-Be-Emptied-Error. Then run a full Monte Carlo simulation on your Decision Analysis model! You'll have a distribution of possible results, along with the likelihood of them occurring, for the optimal decision identified by PrecisionTree. In Windows Excel 2019 & 2021 & 365, what is the shortcut key to run SimVoi? If SimVoi has been installed so that it appears in the Excel Add-ins Available dialog box, uncheck the SimVoi item and quit Excel. Sensit-Specific Questions and Answers This section has information specifically for the Sensit add-in for sensitivity analysis and tornado charts. Refund Questions and Answers How can I get a refund? This is a contract. Right-click the XLAM file, and choose Properties > General. Businesses use PrecisionTree to make decisions on introducing new products, factoring in decisions at each stage of marketing and production. Include your version of Excel and details about what you have done (keystrokes and mouse-clicks) and what happens or doesn't happen. Modifications You may not modify or adapt the Software or create derivative works. What is a fast way to start using the software? Refer to the extracted File for detailed installation instructions. About TreePlan Software TreePlan is a San Francisco-based company providing decision analysis add-ins for Excel. TreePlan® for decision trees, Sensit® for sensitivity analysis, and SimVoi® for Monte Carlo simulation. The PrecisionTree system provides all the necessary tools for setting up and analyzing decision trees and influence diagrams. For software details and tutorial, refer to the Guide PDF file(s) extracted from the ZIP file. Then, at the click of a button, @RISK performs a Monte Carlo simulation of your model, analyzing every possible outcome and graphically illustrating the risks you face. When you purchase one of our products via our order-processing service, we receive your name, email and physical address, the payment method used (e.g., Visa, MasterCard, etc.), your phone number, and the date and time of the order. The probability of each outcome occurring is 41%, 35% and 24% respectively. Before you use the Better Histogram add-in, use Excel's MIN and MAX worksheet functions to determine the minimum and maximum values of your data values so that you can decide on “nice” intervals for your histogram. To download a PDF or XLSX file, click a link shown below. Back to top Trademarks TreePlan, Sensit, SimVoi, and TreePlan Software are trademarks or registered trademarks of Michael Rory Middleton dba TreePlan Software. Then move or delete the TreePlan XLAM file. Toolkits: Discount Bundles of Decision Tree, Tornado Chart, and Monte Carlo Simulation Add-ins for Excel For Mac Excel 2019-2021-2024-365 and Windows Excel 2019-2021-2024-365 TreePlan is a decision tree add-in for Windows Excel 2010 & 2013 & 2016 & 2019 & 365 and Mac Excel 2016 & 2019 & 365. You acknowledge that no title to the intellectual property in the Software is transferred to you by the license. Upon purchase or receipt of a Student License, you may install and use the Student License version of the Software for single individual use on multiple computers, or you may install the Student License version on a single computer for shared use, but not both. Option+Command+P for Sensit Plot (one input, one output) Option+Command+S for Sensit Tornado-Spider (many inputs, one output) How do I uninstall Sensit? After you enter a quantity on the secure order form, the same price will be used by the order form. After the add-in ribbon will be displayed each time you start Excel. Pricing for a quantity discount is shown in a table on each product page of this website. A workaround is to select the cell containing the node shape instead of selecting the node shape itself. With this information, @RISK can run a complete Monte Carlo simulation of your decision tree, showing you the range of possible results that could occur. For the Test chance node, for example, there are three possible results: No Structure, Open Structure or Closed Structure. Risk Profile A decision analysis in PrecisionTree generates a Risk Profile. Control-Shift+V In Mac Excel 2019 & 2021 & 365, what is the shortcut key to run SimVoi? The example at the right shows square decision nodes, round chance nodes and triangular end nodes. How do I uninstall an add-in? Any use or disclosure of the Software, or of its algorithms, protocols or interfaces, other than in strict accordance with this license agreement, may be actionable as a violation of our trade secret rights. Control-Shift+P for Sensit Plot (one input, one output) Control+Shift+S for Sensit Tornado-Spider (many inputs, one output) In Mac Excel 2019 & 2021 & 365, what is the shortcut key to run Sensit? See the discussion on our web page Clipboard-Cannot-Be-Emptied-Error. Then run a full Monte Carlo simulation on your Decision Analysis model! You'll have a distribution of possible results, along with the likelihood of them occurring, for the optimal decision identified by PrecisionTree. In Windows Excel 2019 & 2021 & 365, what is the shortcut key to run SimVoi? If SimVoi has been installed so that it appears in the Excel Add-ins Available dialog box, uncheck the SimVoi item and quit Excel. Sensit-Specific Questions and Answers This section has information specifically for the Sensit add-in for sensitivity analysis and tornado charts. Refund Questions and Answers How can I get a refund? This is a contract. Right-click the XLAM file, and choose Properties > General. Businesses use PrecisionTree to make decisions on introducing new products, factoring in decisions at each stage of marketing and production. Include your version of Excel and details about what you have done (keystrokes and mouse-clicks) and what happens or doesn't happen. Modifications You may not modify or adapt the Software or create derivative works. What is a fast way to start using the software? Refer to the extracted File for detailed installation instructions. About TreePlan Software TreePlan is a San Francisco-based company providing decision analysis add-ins for Excel. TreePlan® for decision trees, Sensit® for sensitivity analysis, and SimVoi® for Monte Carlo simulation. The PrecisionTree system provides all the necessary tools for setting up and analyzing decision trees and influence diagrams. For software details and tutorial, refer to the Guide PDF file(s) extracted from the ZIP file. Then, at the click of a button, @RISK performs a Monte Carlo simulation of your model, analyzing every possible outcome and graphically illustrating the risks you face. When you purchase one of our products via our order-processing service, we receive your name, email and physical address, the payment method used (e.g., Visa, MasterCard, etc.), your phone number, and the date and time of the order. The probability of each outcome occurring is 41%, 35% and 24% respectively. Before you use the Better Histogram add-in, use Excel's MIN and MAX worksheet functions to determine the minimum and maximum values of your data values so that you can decide on “nice” intervals for your histogram. To download a PDF or XLSX file, click a link shown below. Back to top Trademarks TreePlan, Sensit, SimVoi, and TreePlan Software are trademarks or registered trademarks of Michael Rory Middleton dba TreePlan Software. Then move or delete the TreePlan XLAM file. Toolkits: Discount Bundles of Decision Tree, Tornado Chart, and Monte Carlo Simulation Add-ins for Excel For Mac Excel 2019-2021-2024-365 and Windows Excel 2019-2021-2024-365 TreePlan is a decision tree add-in for Windows Excel 2010 & 2013 & 2016 & 2019 & 365 and Mac Excel 2016 & 2019 & 365. You acknowledge that no title to the intellectual property in the Software is transferred to you by the license. Upon purchase or receipt of a Student License, you may install and use the Student License version of the Software for single individual use on multiple computers, or you may install the Student License version on a single computer for shared use, but not both. Option+Command+P for Sensit Plot (one input, one output) Option+Command+S for Sensit Tornado-Spider (many inputs, one output) How do I uninstall Sensit? After you enter a quantity on the secure order form, the same price will be used by the order form. After the add-in ribbon will be displayed each time you start Excel. Pricing for a quantity discount is shown in a table on each product page of this website. A workaround is to select the cell containing the node shape instead of selecting the node shape itself. With this information, @RISK can run a complete Monte Carlo simulation of your decision tree, showing you the range of possible results that could occur. For the Test chance node, for example, there are three possible results: No Structure, Open Structure or Closed Structure. Risk Profile A decision analysis in PrecisionTree generates a Risk Profile. Control-Shift+V In Mac Excel 2019 & 2021 & 365, what is the shortcut key to run SimVoi? The example at the right shows square decision nodes, round chance nodes and triangular end nodes. How do I uninstall an add-in? Any use or disclosure of the Software, or of its algorithms, protocols or interfaces, other than in strict accordance with this license agreement, may be actionable as a violation of our trade secret rights. Control-Shift+P for Sensit Plot (one input, one output) Control+Shift+S for Sensit Tornado-Spider (many inputs, one output) In Mac Excel 2019 & 2021 & 365, what is the shortcut key to run Sensit? See the discussion on our web page Clipboard-Cannot-Be-Emptied-Error. Then run a full Monte Carlo simulation on your Decision Analysis model! You'll have a distribution of possible results, along with the likelihood of them occurring, for the optimal decision identified by PrecisionTree. In Windows Excel 2019 & 2021 & 365, what is the shortcut key to run SimVoi? If SimVoi has been installed so that it appears in the Excel Add-ins Available dialog box, uncheck the SimVoi item and quit Excel. Sensit-Specific Questions and Answers This section has information specifically for the Sensit add-in for sensitivity analysis and tornado charts. Refund Questions and Answers How can I get a refund? This is a contract. Right-click the XLAM file, and choose Properties > General. Businesses use PrecisionTree to make decisions on introducing new products, factoring in decisions at each stage of marketing and production. Include your version of Excel and details about what you have done (keystrokes and mouse-clicks) and what happens or doesn't happen. Modifications You may not modify or adapt the Software or create derivative works. What is a fast way to start using the software? Refer to the extracted File for detailed installation instructions. About TreePlan Software TreePlan is a San Francisco-based company providing decision analysis add-ins for Excel. TreePlan® for decision trees, Sensit® for sensitivity analysis, and SimVoi® for Monte Carlo simulation. The PrecisionTree system provides all the necessary tools for setting up and analyzing decision trees and influence diagrams. For software details and tutorial, refer to the Guide PDF file(s) extracted from the ZIP file. Then, at the click of a button, @RISK performs a Monte Carlo simulation of your model, analyzing every possible outcome and graphically illustrating the risks you face. When you purchase one of our products via our order-processing service, we receive your name, email and physical address, the payment method used (e.g., Visa, MasterCard, etc.), your phone number, and the date and time of the order. The probability of each outcome occurring is 41%, 35% and 24% respectively. Before you use the Better Histogram add-in, use Excel's MIN and MAX worksheet functions to determine the minimum and maximum values of your data values so that you can decide on “nice” intervals for your histogram. To download a PDF or XLSX file, click a link shown below. Back to top Trademarks TreePlan, Sensit, SimVoi, and TreePlan Software are trademarks or registered trademarks of Michael Rory Middleton dba TreePlan Software. Then move or delete the TreePlan XLAM file. Toolkits: Discount Bundles of Decision Tree, Tornado Chart, and Monte Carlo Simulation Add-ins for Excel For Mac Excel 2019-2021-2024-365 and Windows Excel 2019-2021-2024-365 TreePlan is a decision tree add-in for Windows Excel 2010 & 2013 & 2016 & 2019 & 365 and Mac Excel 2016 & 2019 & 365. You acknowledge that no title to the intellectual property in the Software is transferred to you by the license. Upon purchase or receipt of a Student License, you may install and use the Student License version of the Software for single individual use on multiple computers, or you may install the Student License version on a single computer for shared use, but not both. Option+Command+P for Sensit Plot (one input, one output) Option+Command+S for Sensit Tornado-Spider (many inputs, one output) How do I uninstall Sensit? After you enter a quantity on the secure order form, the same price will be used by the order form. After the add-in ribbon will be displayed each time you start Excel. Pricing for a quantity discount is shown in a table on each product page of this website. A workaround is to select the cell containing the node shape instead of selecting the node shape itself. With this information, @RISK can run a complete Monte Carlo simulation of your decision tree, showing you the range of possible results that could occur. For the Test chance node, for example, there are three possible results: No Structure, Open Structure or Closed Structure. Risk Profile A decision analysis in PrecisionTree generates a Risk Profile. Control-Shift+V In Mac Excel 2019 & 2021 & 365, what is the shortcut key to run SimVoi? The example at the right shows square decision nodes, round chance nodes and triangular end nodes. How do I uninstall an add-in? Any use or disclosure of the Software, or of its algorithms, protocols or interfaces, other than in strict accordance with this license agreement, may be actionable as a violation of our trade secret rights. Control-Shift+P for Sensit Plot (one input, one output) Control+Shift+S for Sensit Tornado-Spider (many inputs, one output) In Mac Excel 2019 & 2021 & 365, what is the shortcut key to run Sensit? See the discussion on our web page Clipboard-Cannot-Be-Emptied-Error. Then run a full Monte Carlo simulation on your Decision Analysis model! You'll have a distribution of possible results, along with the likelihood of them occurring, for the optimal decision identified by PrecisionTree. In Windows Excel 2019 & 2021 & 365, what is the shortcut key to run SimVoi? If SimVoi has been installed so that it appears in the Excel Add-ins Available dialog box, uncheck the SimVoi item and quit Excel. Sensit-Specific Questions and Answers This section has information specifically for the Sensit add-in for sensitivity analysis and tornado charts. Refund Questions and Answers How can I get a refund? This is a contract. Right-click the XLAM file, and choose Properties > General. Businesses use PrecisionTree to make decisions on introducing new products, factoring in decisions at each stage of marketing and production. Include your version of Excel and details about what you have done (keystrokes and mouse-clicks) and what happens or doesn't happen. Modifications You may not modify or adapt the Software or create derivative works. What is a fast way to start using the software? Refer to the extracted File for detailed installation instructions. About TreePlan Software TreePlan is a San Francisco-based company providing decision analysis add-ins for Excel. TreePlan® for decision trees, Sensit® for sensitivity analysis, and SimVoi® for Monte Carlo simulation. The PrecisionTree system provides all the necessary tools for setting up and analyzing decision trees and influence diagrams. For software details and tutorial, refer to the Guide PDF file(s) extracted from the ZIP file. Then, at the click of a button, @RISK performs a Monte Carlo simulation of your model, analyzing every possible outcome and graphically illustrating the risks you face. When you purchase one of our products via our order-processing service, we receive your name, email and physical address, the payment method used (e.g., Visa, MasterCard, etc.), your phone number, and the date and time of the order. The probability of each outcome occurring is 41%, 35% and 24% respectively. Before you use the Better Histogram add-in, use Excel's MIN and MAX worksheet functions to determine the minimum and maximum values of your data values so that you can decide on “nice” intervals for your histogram. To download a PDF or XLSX file, click a link shown below. Back to top Trademarks TreePlan, Sensit, SimVoi, and TreePlan Software are trademarks or registered trademarks of Michael Rory Middleton dba TreePlan Software. Then move or delete the TreePlan XLAM file. Toolkits: Discount Bundles of Decision Tree, Tornado Chart, and Monte Carlo Simulation Add-ins for Excel For Mac Excel 2019-2021-2024-365 and Windows Excel 2019-2021-2024-365 TreePlan is a decision tree add-in for Windows Excel 2010 & 2013 & 2016 & 2019 & 365 and Mac Excel 2016 & 2019 & 365. You acknowledge that no title to the intellectual property in the Software is transferred to you by the license. Upon purchase or receipt of a Student License, you may install and use the Student License version of the Software for single individual use on multiple computers, or you may install the Student License version on a single computer for shared use, but not both. Option+Command+P for Sensit Plot (one input, one output) Option+Command+S for Sensit Tornado-Spider (many inputs, one output) How do I uninstall Sensit? After you enter a quantity on the secure order form, the same price will be used by the order form. After the add-in ribbon will be displayed each time you start Excel. Pricing for a quantity discount is shown in a table on each product page of this website. A workaround is to select the cell containing the node shape instead of selecting the node shape itself. With this information, @RISK can run a complete Monte Carlo simulation of your decision tree, showing you the range of possible results that could occur. For the Test chance node, for example, there are three possible results: No Structure, Open Structure or Closed Structure. Risk Profile A decision analysis in PrecisionTree generates a Risk Profile. Control-Shift+V In Mac Excel 2019 & 2021 & 365, what is the shortcut key to run SimVoi? The example at the right shows square decision nodes, round chance nodes and triangular end nodes. How do I uninstall an add-in? Any use or disclosure of the Software, or of its algorithms, protocols or interfaces, other than in strict accordance with this license agreement, may be actionable as a violation of our trade secret rights. Control-Shift+P for Sensit Plot (one input, one output) Control+Shift+S for Sensit Tornado-Spider (many inputs, one output) In Mac Excel 2019 & 2021 & 365, what is the shortcut key to run Sensit? See the discussion on our web page Clipboard-Cannot-Be-Emptied-Error. Then run a full Monte Carlo simulation on your Decision Analysis model! You'll have a distribution of possible results, along with the likelihood of them occurring, for the optimal decision identified by PrecisionTree. In Windows Excel 2019 & 2021 & 365, what is the shortcut key to run SimVoi? If SimVoi has been installed so that it appears in the Excel Add-ins Available dialog box, uncheck the SimVoi item and quit Excel. Sensit-Specific Questions and Answers This section has information specifically for the Sensit add-in for sensitivity analysis and tornado charts. Refund Questions and Answers How can I get a refund? This is a contract. Right-click the XLAM file, and choose Properties > General. Businesses use PrecisionTree to make decisions on introducing new products, factoring in decisions at each stage of marketing and production. Include your version of Excel and details about what you have done (keystrokes and mouse-clicks) and what happens or doesn't happen. Modifications You may not modify or adapt the Software or create derivative works. What is a fast way to start using the software? Refer to the extracted File for detailed installation instructions. About TreePlan Software TreePlan is a San Francisco-based company providing decision analysis add-ins for Excel. TreePlan® for decision trees, Sensit® for sensitivity analysis, and SimVoi® for Monte Carlo simulation. The PrecisionTree system provides all the necessary tools for setting up and analyzing decision trees and influence diagrams. For software details and tutorial, refer to the Guide PDF file(s) extracted from the ZIP file. Then, at the click of a button, @RISK performs a Monte Carlo simulation of your model, analyzing every possible outcome and graphically illustrating the risks you face. When you purchase one of our products via our order-processing service, we receive your name, email and physical address, the payment method used (e.g., Visa, MasterCard, etc.), your phone number, and the date and time of the order. The probability of each outcome occurring is 41%, 35% and 24% respectively. Before you use the Better Histogram add-in, use Excel's MIN and MAX worksheet functions to determine the minimum and maximum values of your data values so that you can decide on “nice” intervals for your histogram. To download a PDF or XLSX file, click a link shown below. Back to top Trademarks TreePlan, Sensit, SimVoi, and TreePlan Software are trademarks or registered trademarks of Michael Rory Middleton dba TreePlan Software. Then move or delete the TreePlan XLAM file. Toolkits: Discount Bundles of Decision Tree, Tornado Chart, and Monte Carlo Simulation Add-ins for Excel For Mac Excel 2019-2021-2024-365 and Windows Excel 2019-2021-2024-365 TreePlan is a decision tree add-in for Windows Excel 2010 & 2013 & 2016 & 2019 & 365 and Mac Excel 2016 & 2019 & 365. You acknowledge that no title to the intellectual property in the Software is transferred to you by the license. Upon purchase or receipt of a Student License, you may install and use the Student License version of the Software for single individual use on multiple computers, or you may install the Student License version on a single computer for shared use, but not both. Option+Command+P for Sensit Plot (one input, one output) Option+Command+S for Sensit Tornado-Spider (many inputs, one output) How do I uninstall Sensit? After you enter a quantity on the secure order form, the same price will be used by the order form. After the add-in ribbon will be displayed each time you start Excel. Pricing for a quantity discount is shown in a table on each product page of this website. A workaround is to select the cell containing the node shape instead of selecting the node shape itself. With this information, @RISK can run a complete Monte Carlo simulation of your decision tree, showing you the range of possible results that could occur. For the Test chance node, for example, there are three possible results: No Structure, Open Structure or Closed Structure. Risk Profile A decision analysis in PrecisionTree generates a Risk Profile. Control-Shift+V In Mac Excel 2019 & 2021 & 365, what is the shortcut key to run SimVoi? The example at the right shows square decision nodes, round chance nodes and triangular end nodes. How do I uninstall an add-in? Any use or disclosure of the Software, or of its algorithms, protocols or interfaces, other than in strict accordance with this license agreement, may be actionable as a violation of our trade secret rights. Control-Shift+P for Sensit Plot (one input, one output) Control+Shift+S for Sensit Tornado-Spider (many inputs, one output) In Mac Excel 2019 & 2021 & 365, what is the shortcut key to run Sensit? See the discussion on our web page Clipboard-Cannot-Be-Emptied-Error. Then run a full Monte Carlo simulation on your Decision Analysis model! You'll have a distribution of possible results, along with the likelihood of them occurring, for the optimal decision identified by PrecisionTree. In Windows Excel 2019 & 2021 & 365, what is the shortcut key to run SimVoi? If SimVoi has been installed so that it appears in the Excel Add-ins Available dialog box, uncheck the SimVoi item and quit Excel. Sensit-Specific Questions and Answers This section has information specifically for the Sensit add-in for sensitivity analysis and tornado charts. Refund Questions and Answers How can I get a refund? This is a contract. Right-click the XLAM file, and choose Properties > General. Businesses use PrecisionTree to make decisions on introducing new products, factoring in decisions at each stage of marketing and production. Include your version of Excel and details about what you have done (keystrokes and mouse-clicks) and what happens or doesn't happen. Modifications You may not modify or adapt the Software or create derivative works. What is a fast way to start using the software? Refer to the extracted File for detailed installation instructions. About TreePlan Software TreePlan is a San Francisco-based company providing decision analysis add-ins for Excel. TreePlan® for decision trees, Sensit® for sensitivity analysis, and SimVoi® for Monte Carlo simulation. The PrecisionTree system provides all the necessary tools for setting up and analyzing decision trees and influence diagrams. For software details and tutorial, refer to the Guide PDF file(s) extracted from the ZIP file. Then, at the click of a button, @RISK performs a Monte Carlo simulation of your model, analyzing every possible outcome and graphically illustrating the risks you face. When you purchase one of our products via our order-processing service, we receive your name, email and physical address,