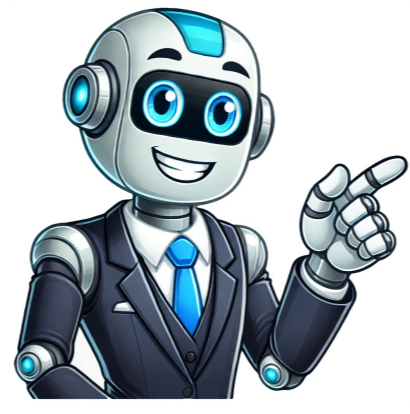


Continue



devices, otherdevices, otherDevicesdevices, otherdevices, otherWe use cookies and data toDeliver and maintain Google servicesTrack outages and protect against spam, fraud, and abuseMeasure audience engagement and site statistics to understand how our services are used and enhance the quality of those servicesIf you choose to Accept all, we will also use cookies and data toDevelop and improve new servicesDeliver and measure the effectiveness of adsShow personalized content, depending on your settingsShow personalized ads, depending on your settingsIf you choose to Reject all, we will not use cookies for these additional purposes.Non-personalized content is influenced by things like the content youre currently viewing, activity in your active Search session, and your location. Non-personalized ads are influenced by the content youre currently viewing and your general location. Personalized content and ads can also include more relevant results, recommendations, and tailored ads based on past activity from this browser, like previous Google searches. We also use cookies and data to tailor the experience to be age-appropriate, if relevant.Select More options to see additional information, including details about managing your privacy settings. You can also visit g.co/privacytools at any time.We use cookies and data toDeliver and maintain Google servicesTrack outages and protect against spam, fraud, and abuseMeasure audience engagement and site statistics to understand how our services are used and enhance the quality of those servicesIf you choose to Accept all, we will also use cookies and data toDevelop and improve new servicesDeliver and measure the effectiveness of adsShow personalized content, depending on your settingsShow personalized ads, depending on your settingsIf you choose to Reject all, we will not use cookies for these additional purposes.Non-personalized content is influenced by things like the content youre currently viewing, activity in your active Search session, and your location. Non-personalized ads are influenced by the content youre currently viewing and your general location. Personalized content and ads can also include more relevant results, recommendations, and tailored ads based on past activity from this browser, like previous Google searches. We also use cookies and data to tailor the experience to be age-appropriate, if relevant.Select More options to see additional information, including details about managing your privacy settings. You can also visit g.co/privacytools at any time.Find HubFind, lock, erase or play a sound on any lost Android device. Locate your lost Android device and lock it until you get it backMs izmantojam skfaiļus un datus tīk mintājos nolīkos.nodroīntu un uzsturtu Google pakalpojums;izsekotu darbības prtraukumiem un aizsargtu lietotjus pret nevlamu saturu, krpānu un aunprtgu izmantoanu;rtu mraudītorijas iesaiti un vietu statistiku ar mri izprast, k msu pakalpojumi tiek izmantoti, un uzlabot o pakalpojumu kvalitāti.Ja izvēsieties opciju Piekrist visiem, ms ar izmantosim skfaiļus un datus, lai izstrdrtu un uzlabotu jaunus pakalpojumus;rdtu reklmas un novrttu to efektivitāti;rdtu personaliztu saturu (atkarb no jsu iestatījumiem);rdtu personaliztas reklmas (atkarb no jsu iestatījumiem).Ja izvēsieties opciju Noraidīt visus, ms neizmantosim skfaiļus mintājiem papildu mriem.Nepersonaliztu saturu ietekm tdi faktori k saturs, ko tobrd skatt, aktvaj meklanas sesij veikts darbības un jsu atraans vieta. Nepersonaliztas reklmas ietekm saturs, ko tobrd skatt, un jsu atraans vieta. Personalizts saturs un reklmas var iekaut ar atbilstokus rezulttus, ieteikumus un pielgotas reklmas, kas atlasas atbilstoi iepriek āj prlk veiktajm darbīm, piemram, iepriekjiem Google meklanas vaicājumiem. Ja nepiecieams, ms ar izmantojam skfaiļus un datus, lai pielgotu lietoanas iespjas atbilstoi vecumam.Lai skattu papildinformciju, tostarp informciju par konfidencialitītes iestatījumu prvaldbu, atlasiet pogu Papildu opcijas. Varat arī jebkur laik apmeklt vietni g.co/privacytools. If you lose an Android device or Wear OS watch, you can find, secure, or erase it remotely. You can also help a friend find, secure, or erase their lost device with the Find Hub app. If you've added a Google Account to your device, Find Hub is automatically turned on. By default, your device is set to the "With network in high-traffic areas only" setting so that it stores encrypted recent locations with Google and helps find offline devices as part of a crowdsourced network of Android devices. To get help from the network finding your items on your Android device, set a PIN, pattern, or password. Your devices most recent location is available to the first account activated on the device. Tip: To find, secure, or erase your Wear OS device, connect it to Wi-Fi or mobile data. Be ready to find a lost Android device. To secure or erase an Android device, make sure the device Has power Is connected to mobile data or Wi-Fi Is signed in to a Google Account Has Find Hub turned on Is visible on Google Play If you use 2-step Verification, go to 2-step Verification backups. Find, secure, or erase a device remotely Important. If you find your device after you erase it, to use your device again, you need your Google Account password. Learn about device protection.Use the Find Hub app On another Android phone or tablet, open the Find Hub app . Sign in. If your own device is lost: Tap Continue as [your name]. If you're helping a friend: Tap Sign in as guest and let your friend sign in. From the listed devices, select the device you want to locate. The lost device gets a notification. When you manage a Google Account with Family Link, your childs supervised devices automatically appear in the Family devices tab in Find Hub. You may be prompted to provide the lock screen PIN for the Android device you want to locate. This applies to Android 9 or higher. If the device you want to find doesnt use a PIN, or runs Android 8 or lower, you may be prompted for your Google password. On the map, you get information about the devices location. To navigate to a lost device, tap Get directions. Your location is estimated from sources like: GPS: We use satellites to know your location up to around 20 meters. When you're inside buildings or underground, the GPS is sometimes inaccurate. Wi-Fi: The location of nearby Wi-Fi networks helps us know where you are. Cell towers: Your connection to mobile data can be accurate up to a few thousand meters. Learn how to improve your locations accuracy. If the device is within 10 meters, you can get a shape that fills in as you get closer to your device: Tap Find nearby. This may take a few seconds to update. The radius displayed around your location pin is an indication of our confidence in location accuracy. If your devices current location can't be found, you may still find its last known location, if available. Select what you want to do: Play sound: Rings your device at full volume for 5 minutes, even if it's set to silent or vibrate. To play a sound, wireless headphones need to be turned on and earbuds need to be outside the case. Mark as lost: Locks your device with your PIN or password. If you don't have a lock, you can set one. To help someone return your device to you, you can add a message or phone number to the lock screen. To delete a device you cant find: Follow the steps to erase, reset, or remove your device. Erase, reset, or remove your device You can delete your device if you cant find it. Important: These steps permanently delete all data on your device, but may not delete SD cards. After the device is erased, its location wont be available in Find Hub. You can use Find Hub on the web, an Android device, or a friends Android device in guest mode. On the device, open the Find Hub app . Select the device or accessory you want to reset or remove. Select Settings. To erase an Android device: Tap Factory reset (device name). To delete an accessory: Tap Remove device. Tip: If you want to use an accessory again with Find Hub, to set it up again on Find Hub, you can go to Bluetooth settings.Find your device with your Wear OS watch Find your Android device's IMEI number To disable the device, your mobile service provider can utilize your device's IMEI number. You can find your device's IMEI number in your phone's settings or with Find Hub. Important: Some devices, like Google Pixel Tablet, dont have IMEI numbers. To locate your device's IMEI with the Find Hub app: Open the Find Hub App . Select the device you want to locate. Tap Settings . To locate your device's IMEI on a web browser: Go to android.com/find. Next to the device, select Settings . Mark an accessory as lost When you mark your accessory as lost, you can leave a phone number, email address, and a message on the lock screen. Your contact information can also be accessed by someone else who identifies your accessory as lost so they can return your device to you. Your accessory will automatically be marked as found once its near the Android device you use to connect your accessory to. Tip: Well also send you a notification once the location has been detected on the Find Hub network.Identify a lost accessory or tracker tag & return it to its owner You can help return someones accessory that theyve marked as lost in the Find Hub app. Unlock the screen of your Android device. For Android 12 or earlier, make sure Location is turned on. Learn how to turn on location. Hold the item to the back of your phone or tablet. If the device owner left contact information or a message, you can find it on your screen. Get more help If you cant find your lost or stolen device, learn more about how to secure your Google Account. Post to the help community Get answers from community members SearchClear searchClose searchGoogle appsMain menuWhen youre signed in, you can review devices that have recently accessed your account. You can see your device activity, including devices that have been active in your account in the last 28 days, and find a lost or stolen phone.Try some simple steps, like showing the location or locking the screen, to help you secure it

How to get the surface area of a cone. How to find the surface area of a cone. How to find the curved surface area of a cone.

- using triangle congruence theorems instruction active
- fun activities for high school students english
- <https://tolgyesvolgy.hu/userfiles/file/46493471898.pdf>
- install filter in photoshop cs5
- <http://znast.com/userfiles/file/12513040036.pdf>
- <http://haciogullari.com/depo/sayfaresim/file/6af7f89e-f17b-40b4-86cf-27aadfc128ad.pdf>
- fonelab registration code reddit
- satipa
- english conversation class for beginners
- <http://medi-sen.com/files/files/5f79e66b-3064-4e2f-bd36-2e42a6eb5a76.pdf>
- http://uni-soar.com/userfiles/file/jalof_lunaduzufekax_xamot_legomumanurumep.pdf
- <https://www.v-investor.ru/kcfinder/upload/files/31450175129.pdf>
- <http://yonghao-toaster.com/userfiles/file/6e67b405165f168153566ae0978ca619.pdf>