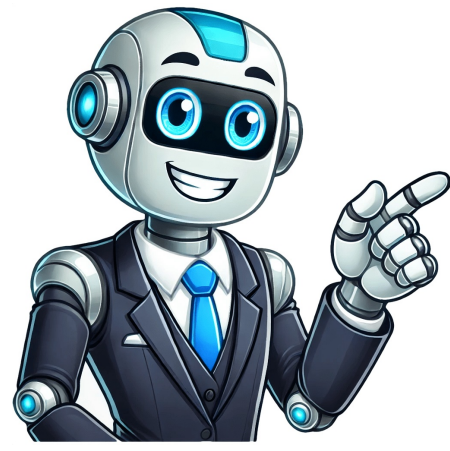


I'm not a bot



Walmart maintenance assessment test

Walmart maintenance technicians are responsible for maintaining the safety and function of equipment and facilities. Maintenance technicians are hired in several areas. HVAC, transportation maintenance, distribution center maintenance, and general maintenance. There are different levels of maintenance technician, and the level that is right for you will depend on your prior level of experience. Maintenance technicians will need at minimum a Vocational or Trade certificate and a valid driver's license. HVAC and transportation maintenance workers should have certificates in those specific areas, while general maintenance workers can hold certificates in electricity or plumbing. The minimum years of experience required varies depending on the level of the job. Maintenance technicians are eligible for Walmart benefits that include health plan options, associate discounts, education assistance, parental leave, and investment and stock purchase plans. Walmart Maintenance Technician Assessments To prove that you are qualified to become part of Walmart's skilled maintenance crew you will be given a computerized assessment test. The exams are designed by the Ramsay Corporation, specifically for Walmart, and are similar to their standard maintenance test. There are several versions of assessments for Walmart maintenance workers. The one you will be required to take will depend on the level of the position, and the type of maintenance position you have applied for. The tests will cover the areas of electrical repair, building maintenance, equipment repair, and motors. There will be some specialized questions for those who have applied for HVAC, or other specific maintenance positions. The assessments are multiple-choice and will take about an hour to complete. Most of the assessments are 60 questions. They are multiple-choice, and many of the questions will require you to read and interpret diagrams and schematics. You will be able to use a calculator and keep scratch paper handy. You will not receive a numerical score on the Walmart Maintenance Assessment. When you complete the test you will be given a result of either "Competitive" or "Non-competitive." If your score was competitive you will likely be contacted for an interview. If your score was non-competitive, you will not be going in further in the hiring process. The layout of the General Maintenance Assessment will resemble the basic Ramsay Maintenance Assessment: Hydraulics, and pneumatics- 15 questions Print Reading- 4 questions Welding and Rigging- 7 questions Power transmission - 5 questions Lubrication- 4 questions Pumps and piping- 7 questions Mechanical Maintenance- 10 questions Tools and equipment- 8 questions Other maintenance technician assessments will have similar layouts, with more specific questions about the systems you will be working on included. How to Prepare for the Walmart Maintenance Technician Assessment? Maintenance technician assessments are designed to be challenging and test your level of attention to detail. They also cover a broad range of topics. Even if you will be doing maintenance in a specific area you will need to demonstrate a broad knowledge of general maintenance topics. As you prepare, re-read the job description and see which areas are specifically mentioned. This will give you an idea of which areas to focus your studies on. For example, if you are an applicant for an HVAC maintenance position you would know to focus on the mechanics, energy management, and troubleshooting of HVAC systems. The answers on Ramsay tests are worded so they seem similar. This is where your attention to detail comes in. Read everything thoroughly, and don't rush. You will not be timed, and you can take as much time as you need on this test, although most test takers finish the test in about an hour. You will be able to take this test from your personal computer. Set up a workstation in an area that is quiet, and where you know you will be able to concentrate. Have your paper and calculator nearby and ready to go so you aren't searching in the middle of the test. Walmart Assessment Test Info Learn how to pass the Walmart assessment test. Practice Situational Judgment Questions Situational Judgment Tests (SJTs) are a significant part of the assessment. These questions present hypothetical workplace scenarios where you must choose the most appropriate response. Prepare for Numerical Reasoning Expect questions that test your ability to handle basic arithmetic and numerical data. Practice calculating percentages, totals, and making change to improve both your accuracy and speed. Be Consistent when Answering the Personality Assessment The personality section evaluates your work style and consistency. Answer honestly and avoid overthinking. Consistency in your responses is crucial, as discrepancies can raise concerns. Understand the Role You're Applying For Tailor your answers to the role you're applying for, adjusting based on the job's specific skills and requirements. Practice with Sample Questions Familiarize yourself with the test format by practicing sample questions. This will help you become comfortable with the types of questions asked and boost your confidence. The Walmart Maintenance Assessment is a critical test for candidates applying to maintenance roles such as Maintenance Technician and General Maintenance Associate. This assessment, provided by Ramsay Corporation, is known for its challenging questions across technical and mechanical areas, making preparation essential for success. The Walmart Maintenance Assessment includes 60 questions on mechanical, electrical, and troubleshooting topics for Walmart's maintenance roles. Some key areas you'll be tested on include: • Hydraulics and Pneumatics • Welding and Rigging • Power transmission, Mechanical Maintenance, and Tools • Electrical Maintenance and AC/DC Theory Try this Walmart Manager Assessment practice question: In a 110V electrical system, there are three appliances: appliance A (550W) appliance B (770W), and appliance C (330W). Given that all appliances operate simultaneously, what is the minimum required fuse rating? View Explanation The correct answer is C.The minimal fuse rating should be higher than the normal operating current of the system. Since an electrical system is connected in parallel, the total current in the system when all three appliances are working is the sum of all three.The current consumption of each appliance is calculated by:I = P/VWhere:I = Current [Ampere]P = Power [Watt]V = Voltage [Volt]Therefore:Appliance A consumes 550/110 = 5AAppliance B consumes 770/110 = 7AAppliance C consumes 330/110 = 3AThe total current in the system is 5 + 7 + 3 = 15AIn order to withstand normal working conditions, the minimal fuse amperage rating must be greater than 15A, thus 20A. Walmart Maintenance Assessment To get a better sense of what our practice tests look like, take this interactive assessment. Our Walmart Maintenance Assessment PrepPack includes: Practice Tests that mirror the actual Walmart Maintenance Test format Comprehensive Study Guides covering each mechanical and electrical topic Detailed Explanations for every question to enhance your understanding The Walmart Manager Assessment is a vital test for candidates aiming for Walmart's managerial positions, including roles such as Assistant Manager, Area Manager, Coach Trainee, and Store Manager. This assessment evaluates essential skills in leadership, decision-making, and strategic thinking, ensuring Walmart hires managers who can drive success and support their teams effectively. The Walmart Manager Assessment is divided into five sections, each designed to measure key managerial competencies: Work with Associates- Tests your ability to foster a collaborative and productive work environment. Run Your Business - Assesses decision-making skills in managing business operations, budgeting, and prioritizing tasks. Manage Your Day - Evaluates your skills in time management, organization, and task prioritization, crucial for a managerial role. Tell Us Your Story - Collects insights on your past experiences, work habits, and values to see how they align with Walmart's culture. Describe Your Approach - Examines your approach to problem-solving, leadership style, and ability to adapt to different scenarios. This assessment also includes situational judgment tests, which are designed to assess: Try this Walmart Maintenance Assessment practice question: Please indicate to which extent you agree or disagree with the following statement. a) I usually define realistic goals.b) I usually define goals that are hard to achieve. Most like (a) Somewhat like (a) Somewhat like (b) Most like (b) View Explanation How to Answer Such a Question Although it seems wise to present yourself as someone who aspires high, remember that setting realistic, measurable goals is an integral part of a manager's daily life, done to promote their team and company. If you recall my recommendation from earlier - don't exaggerate. Present yourself positively, but not in a way that might eventually be detrimental to your success. Walmart Manager Assessment To get a better sense of what our practice tests look like, take this Walmart manager interactive assessment. Our Walmart Manager Assessment PrepPack gives you everything you need to feel confident and prepared. You'll get: 14 Full-Length Practice Tests simulating the actual exam Study Guides on essential skills for Walmart managers Detailed Answer Explanations to improve understanding Ace the Walmart Manager Assessment The Walmart Retail Associate Assessment (RAA) is a key part of the hiring process for many of Walmart's hourly positions, such as cashier, front-end associate, order filler, and personal shopper. This assessment evaluates your ability to handle customer interactions, manage transactions, and demonstrate the personal qualities Walmart values in its team members. To succeed, it's important to prepare thoroughly to meet Walmart's expectations in all four sections of this challenging test. The Walmart Retail Associate Assessment consists of four main sections, each designed to measure specific skills and competencies essential for customer-facing roles: Work with Customers and Associates: A Situational Judgment Test assessing your interpersonal skills in handling customer service scenarios. Handle Customer Transactions: Tests your speed and accuracy in managing cash transactions. Tell Us Your Story: A questionnaire about your background, work experience, and values to assess cultural fit. Describe Your Approach: A personality assessment evaluating your work style and consistency in handling job responsibilities and customer interactions. For certain roles, it's essential to score well on all sections to pass. Remember that failing any one section will result in failing the entire assessment, and you'll need to wait six months before retaking it. Try this Walmart Retail Associate Assessment practice question: If contacted, how would your recent supervisor describe your customer service skills compared to other team members? The very best Among the best Above average Average Needing some development Needing substantial development View Explanation It is important to be consistent with your answers and your CV.Different questions can evaluate the same information. Your personality profile has to make sense. You must make sure to avoid contradictions in your test answers. Walmart Retail Associate Assessment This Walmart Retail Associates practice test covers customer transaction scenarios. For SJT and self-assessment questions, see the PDF below to get a sense of our preparation process. Everything you need to succeed is inside our PrepPack: Accurate Practice Tests - Mirror the real RAA format and question types Behavioral & Personality Training - Tackle the trickiest sections with ease Step-by-Step Explanations - Learn best practices for every answer The Walmart Teaming Employment Assessment (TEA) is a key step in the hiring process for roles such as Team Lead, Hourly Supervisor, Academy Trainer, and Department Manager. This assessment is designed to evaluate your teamwork, customer service, and leadership skills—qualities essential for roles that require collaboration and direct interaction with Walmart customers and associates. The Walmart Teaming Employment Assessment consists of five main sections, each aimed at evaluating specific competencies needed for team-oriented positions. These sections are: Work with Associates- Assesses your ability to collaborate effectively with team members and maintain a positive, productive work environment. Manage Your Area- Tests your skills in organizing and overseeing your designated area, ensuring it meets Walmart's standards and operational goals. Manage Your Day- Evaluates how you handle daily responsibilities, prioritize tasks, and manage time efficiently in a fast-paced setting. Tell Us Your Story- Gathers insights into your past experiences, work values, and background to determine how well they align with Walmart's culture and expectations. Describe Your Approach- The assessment includes customer service scenarios, which help measure how effectively candidates interact with and assist Walmart customers. Some roles, like Academy Trainer and Store Lead, require a Virtual Reality (VR) Assessment. In this immersive test, you'll face real-world scenarios, such as handling customer complaints, managing messy aisles, and addressing team issues. Try this Walmart Teaming Employment Assessment practice question: Which department had the highest productivity during quarters 1 and 2? Department 1Department 2Department 3Department 4Department 5 View Explanation Check Out Answer and Explanation The correct answer is D.ExplanationThe graph presents the productivity levels (by percentages), for 5 departments, during 4 quarters.To find the department with the highest productivity during quarters 1 and 2, we should look only at the first two departments.Then, look for the department whose markers for Quarters 1 and 2 are at the top. You can easily see that Departments 1 and 4 are the top ones, but they cross each other, so we should compare them: in Quarter 1, Department 4 is much higher than Department 1, while in Quarter 2, both departments are very similar. Therefore, the summation of Quarters 1 and 2 for Department 4 is higher than Department 1. Therefore, Department 4 has the highest productivity levels. Our expertly designed PrepPack gives you the tools to succeed—faster and smarter. 13 Full-Length Practice Tests that match the real assessment Role-Specific Score Reports to target your preparation Detailed Answer Explanations to build lasting understanding The Walmart Supply Chain Assessment, provided by Virtual Job Tryout (VJT), is crucial for applicants applying to Walmart's supply chain roles, including positions like Supply Chain Associate, Freight Handler, and Driver. This assessment gauges your capabilities in logistics, data analysis, and teamwork—key skills needed for Walmart's fast-paced supply chain environment. The assessment is divided into five sections that evaluate various competencies essential for supply chain roles: Work with Associates - Assesses your ability to work effectively with coworkers, promoting collaboration and efficient teamwork within Walmart's supply chain. Check Your Pallet - Tests your accuracy and attention to detail in organizing and handling pallets, as well as your understanding of inventory processes. Working with Information - Evaluates your analytical abilities in interpreting data, making decisions, and troubleshooting issues affecting product flow and distribution. Tell Us Your Story - Provides an opportunity to share relevant work experiences, demonstrating how your background aligns with Walmart's values and operational standards. Describe Your Approach - Examines your personal work style, focusing on your reliability, organization, and problem-solving approach in a supply chain setting. In some cases, this assessment includes interactive simulations that replicate real-life tasks, allowing Walmart to see how you'd handle everyday challenges in their supply chain environment. Try this Walmart Teaming Employment Assessment practice question: Walmart's 'Check Your Pallet' Sample Question The correct answer is 4 full units, 8 additional items.Dividing 52 by 11, we get:52/11 = 4 + 8 (remainder), since:11 x 4 + 8 = 52.As mentioned before, the calculation itself is pretty simple (although calculations get more complicated as the test progresses). The main challenge is the need to solve a large number of questions in a short tim. Gain the edge with our PrepPack, crafted to help you excel in every section: Practice Tests tailored to the VJT format Study Guides focused on real supply chain scenarios Answer Explanations to help you learn and improve quickly Walmart's recruitment process includes several key steps, depending on the specific role: Step 1: Online Application Candidates first complete an application form online. Step 2: Assessment Tests After applying, candidates take a Walmart Assessment Test relevant to their desired role. These tests, provided by Walmart's partners like Ramsay Corporation and Virtual Job Tryout (VJT), measure critical skills such as teamwork, technical knowledge, and decision-making. Step 3: Interviews Successful candidates are invited for one or more interviews to discuss their skills, experience, and alignment with Walmart's culture. Step 4: Additional Screenings Certain roles may involve background checks or other screenings before a job offer is made.Preparing thoroughly for each step greatly enhances your chances of success. The Walmart Assessment Tests include different evaluations based on the position you're applying for. These assessments measure a range of skills, including customer service, leadership, decision-making, technical knowledge, and teamwork. Tests vary by role and may include virtual reality simulations, situational judgment tests, and problem-solving exercises. Yes, most Walmart Assessment Tests are timed to evaluate your ability to work under pressure. The time limits vary depending on the specific test and the role. Practicing under timed conditions can help improve your performance on test day. The number of questions varies by test. For example, the retail positions assessment typically includes 65 questions across five sections, while the Walmart Maintenance Assessment has 60 questions covering maintenance-related topics. Yes, certain positions require completing an assessment during the application process, such as retail, logistics, or supervisory leadership assessments. Yes. If you fail, you may need to wait a few months to a year before reapplying. If you see a green notification, you've passed. A red notification indicates you've failed. Most candidates report the interview as easy. According to an Indeed survey, 67% of respondents felt it fairly assessed their skills. Walmart and other trademarks are the property of their respective trademark holders. None of the trademark holders are affiliated with JobTestPrep or this website. Taking a Walmart maintenance test is a great way to determine if you're ready to work in the maintenance department at your local Walmart store. While it may seem intimidating, there are several ways to prepare for the test. You can take a practice test, study for a test at your local Walmart store, or take an assessment test. Taking the Walmart DC maintenance technician test can be a little daunting. You have to make sure you are familiar with the various types of maintenance tests, and you need to know where to focus your prep efforts to get a better score.The Walmart DC maintenance technician test covers different aspects of the job, from ensuring functionality to ensuring safety. There are also opportunities for advancement. A Walmart maintenance technician can make up to \$70,000 a year, depending on where he or she is working.Taking the Walmart DC maintenance technician test will not be the only test you are asked to take during the hiring process. In addition to the main job application, you will be asked to fill out an applicant account. This account will be used as a reference for the hiring process. It will include a 27-question personality test, as well as an application question called the "Likert Scale". These questions are designed to ask you to identify your strengths and weaknesses. They are also designed to evaluate your style of work. Depending on the position, applicants are required to take a variety of Walmart tests. Each test focuses on the skills necessary for the position. For example, Walmart's Distribution Maintenance Technician Test is a complex test that tests a candidate's knowledge in maintenance and repair.Walmart's Maintenance Tech Test is a computer-based test. It is a multiple-choice test that requires a candidate to use a calculator. It takes about an hour to complete. It is a required test for general maintenance positions, as well as distribution center maintenance positions.The Walmart Maintenance Tech Test is similar to the Ramsay Maintenance Test. It consists of seven sections. It is a test that assesses practical knowledge, as well as theoretical knowledge. It is not a final hiring decision, but the results of the test will determine whether you can be hired as a Walmart maintenance technician.The Walmart Maintenance Assessment is a knowledge test that consists of seven test sections. Each section has multiple-choice questions. The test is graded pass or fail. The results are usually sent to the candidate's email. Taking a Walmart maintenance assessment test is an important part of the hiring process for Walmart maintenance technicians. The test assesses a candidate's knowledge and skills in practical maintenance and theoretical knowledge.The test includes 65 questions, and is divided into four sections. Each section has sample questions, along with study guides to prepare for the test. The test is administered on the Walmart store computer. The results are usually emailed to the candidate.Taking the Walmart assessment test is a great way to gauge a candidate's work style, as questions are designed to show a candidate's work history and what kind of person they are. The questions are a mix of scenario-based questions, which ask applicants to choose the best reaction. The questions are also designed to measure a candidate's work-style and priorities. The Walmart assessment test is an hour-long test. It consists of a variety of questions that measure a candidate's work-style, ability to prioritize activities, and leadership skills. Those who pass the test are contacted by a Walmart recruiter to continue the hiring process. Those interested in a career with Walmart can apply for a job as a maintenance technician. The salary for this position varies based on location and experience.To qualify, a maintenance technician must have a vocational or trade certificate. He or she must also have a valid driver's license. The technician is responsible for maintenance schedules, equipment repairs and upkeep of stores and buildings. He or she must also comply with OSHA regulations.Maintenance technicians are also expected to have extensive knowledge of technology and maintenance. They may work full time or part time. They may be eligible for associate discounts and investment plans. They are also eligible for parental leave. They can earn between \$17 and \$24 an hour.Maintenance technicians are required to pass a computerized test called the Maintenance Tech Test. This test tests an applicant's knowledge of mechanical and electrical concepts. The test can be completed in about an hour. Applicants are also allowed to use a calculator.Walmart maintenance technicians are hired in several different areas, including building maintenance, electrical repair, and equipment repair. They may also be hired to work in the distribution center. Applicants must pass the Walmart distribution maintenance test in order to become a maintenance technician at Walmart. This is a computer-based test that will take about an hour to complete.Applicants are given a score, which is usually accompanied by a phone call from a human resources representative. The score is based on the number of questions answered correctly. The test is used to evaluate applicants' knowledge of customer service and team management, as well as their readiness to work under supervisors.The Walmart maintenance test is a series of multiple-choice questions. Candidates are allowed to use scrap paper to assist them during the test. Applicants are also encouraged to take a calculator. The test is comprised of seven different sections.The Walmart distribution maintenance test is not the only test that Walmart conducts. In fact, the company has developed several different tests to determine whether a prospective employee is a good fit for the company. These tests vary by role. The company also conducts a background check, which includes checking out applicants' criminal records. Taking a Walmart maintenance practice test can be a helpful way to prepare for the actual test. It can also give you some insight into what the test is looking for. This test is one of three tests used by Walmart to determine the skill sets and abilities of applicants. It is designed to assess an applicant's technical and practical knowledge of maintenance. It also tests an applicant's ability to work with other employees and customers. It is a multiple-choice test and takes about an hour to complete.The test includes a variety of technical and practical questions that may require a candidate to know schematics, read diagrams and understand electrical repair. The test also includes questions about team management.The test is divided into seven sections. Each section includes sample questions and study guides. The test is not time-bound, and scores are usually sent via email. The test also includes a 27-question personality test.The test contains questions that can be answered with five options. Each question is designed to measure an applicant's ability to work with others and customers. Some questions seek to determine a person's preferred work style. Other questions focus on a person's ability to handle retail situations. Taking the Walmart Maintenance Tech Test is a must if you are applying for a job as a general maintenance technician. It is a computer-based, multiple-choice test designed to assess both theoretical and practical knowledge. It's a good idea to study and practice before taking it.The questions on the test are adapted from the Ramsay Maintenance Test, which a company that is part of Walmart's corporate training. The test is scored non-qualified, meaning that the applicant doesn't have to be a qualified mechanic to pass.The Walmart Maintenance Tech Test is a computer-based test that takes about an hour to complete. After passing, you'll receive a call from Walmart's HR department. The company reimburses the exam costs if you pass.Applicants are asked to create an applicant account. Once you have a login, you can access the Walmart Maintenance Tech Test and take it during store hours. You'll need a high school diploma and a valid commercial driver's license to take the test.There are seven sections on the Walmart Maintenance Tech Test. Each of these sections tests a different area of maintenance. They include electrical knowledge, power transmission, plumbing, mechanical knowledge, and general cleaning. Getting a job at Walmart requires a lot of preparation and education. Walmart has a variety of tests, based on the specific job position you are applying for. These tests can help you prepare for the job and give you an idea of where you should focus your prep efforts.Walmart Maintenance Technicians are responsible for maintaining the cleanliness of the store's equipment, tools and storage areas. They also work mandatory overtime during renovations and during holidays. A minimum of a high school diploma is required for this position. You will also need a valid driver's license.The Walmart Maintenance Technician Test is a computer-based test that takes about an hour to complete. The test covers a wide range of technical questions. You will also have the option of using a calculator.The test is divided into seven sections. Each section contains about eight questions with multiple-choice answers. You will receive a score for each section. You will also have your results sent to you via email. These results are graded pass or fail. Incorrectly fitted cylinder head Loading Questions... A test that assesses practical and theoretical knowledge for ANY maintenance positions. A test that assesses practical and theoretical knowledge for Walmart maintenance positions. A test that only assesses practical knowledge. A multiple-choice test that does not require a calculator and takes about an hour to complete.