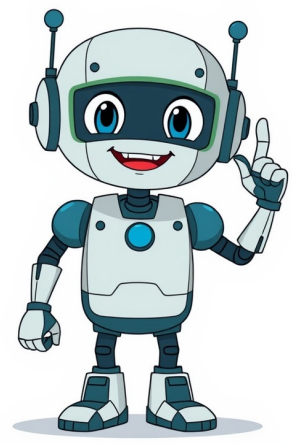


Continue





































To plan your visit to Sunset Campground and Bryce Canyon National Park, advance reservations are recommended during peak season. For non-peak season, you can make reservations up to 14 days in advance via Recreation.gov. However, from April 15 to May 16, the campground operates on a weather-dependent basis, allowing for shorter reservation windows. Bryce Canyon is not just one canyon but rather a series of natural amphitheaters carved into the edge of a high plateau. The most famous viewpoint is the Bryce Amphitheater, filled with hoodoos, and offers four main viewpoints: Bryce Point, Inspiration Point, Sunset Point, and Sunrise Point. A shuttle service reduces congestion in this area between April and October. During peak season, horseback rides and concessioner-provided activities are available, catering to various interests. The park also offers ranger programs, including geology talks, rim walks, evening programs, and astronomy sessions. The Jr. Ranger Program is suitable for children, and the park map helps visitors familiarize themselves with the layout. All park visitors must purchase a recreational use pass, which covers both the visitor and passengers in a motorized vehicle. Children under 16 do not need an entrance pass, while those over 16 years old require their own pass if entering on a bicycle or foot. By an organization that realizes financial gain through the provision of a service, commercial tours operate based on vehicle capacity fees only. Passes are valid for one day after purchase and six consecutive days for vehicles carrying the same passengers in groups of seven or more. A tour is considered leisure travel when packaged and sold by an entity aiming to profit from the service, with entry fees set according to the number of passengers it can accommodate. Fee stations also accept credit/debit only commercial vehicle rates are based on vehicle capacity. Passes are valid for the day of purchase and the next six days for a vehicle carrying the same group of passengers. A commercial tour is defined as one or more persons traveling on an itinerary packaged, priced, or sold by an organization that realizes financial gain through the provision of a service. The entry fees of commercial tours are based upon the total capacity of vehicles that can carry seven or more passengers regardless of actual passenger numbers. Fee Stations Credit/Debit Only Commercial tour vehicle rates are based on vehicle capacity. Passes are valid for the day of purchase and the next six days for a vehicle carrying the same group of passengers. A commercial tour is defined as consisting of one or more persons traveling on an itinerary that has been packaged, priced, or sold by an organization that realizes financial gain through the provision of a service. The entry fees of commercial tours are based upon the total capacity of vehicles. Fee Stations Credit/Debit Only Last updated: May 2, 2024 To reach Bryce Point, travel 1.5 miles past the Visitor Center along the Main Road, turning left at the sign for Bryce Point. From here it is 2 miles up to the viewpoint. On your way back down, turn right just before reaching the Main Road to see Inspiration Point. Those looking for an easier walk might prefer to head north along the rim, keeping an eye out for steep cliffs in this area. Head back down from Inspiration Point and return to the Main Road. Turn right to return to the Visitor Center. Your next signed right turn will be for Sunset Point. Seeing Sunrise Point can be done two ways. One is to simply walk from Sunset Point using the Rim Trail, a 0.5 mile flat walk one-way. The other way is to drive, but be aware it is a short 0.2 mile walk from the Sunrise Parking area. To drive, return to the Main Road from Sunset Point parking and turn right. With the exception of vehicles over 20 feet/6 meters in length, riding the shuttle is not mandatory. However, by using our buses you support keeping parking lots small and provide clean air for everyone to experience the magic of Bryce Canyon. The Bryce Amphitheater Shuttle runs regularly on 15 minute intervals from 8 a.m. to 6 p.m., and extended hours to 8 p.m. in summer. It brings visitors to areas of interest, viewpoints, and trailheads within the Bryce Amphitheater area of the park. The shuttle is free with park admission. There is no extra fee to use the shuttle system. Paying your \$35 entrance fee to Bryce Canyon entitles you and your vehicle's occupants to unlimited use of the Bryce Canyon Shuttle buses. Proper hiking etiquette enables visitors to fully immerse themselves in nature while respecting other trail users and preserving the environment. The key principle is the "golden rule": treat others as you would like to be treated. This involves adhering to specific guidelines such as staying on designated trails, refraining from using social trails that can harm vegetation, and not climbing hoodoos due to their precarious nature. Furthermore, maintaining a low profile by keeping noise levels down and not feeding or disturbing wildlife is crucial for both visitor safety and the well-being of animals. By following these principles, particularly "Leave No Trace," visitors can minimize their impact on the environment and enhance their overall experience in nature.

**What are the 12 cognitive distortions. What are examples of cognitive distortions. What are the types of cognitive distortions. Common cognitive distortions. What are cognitive distortions. What are the different cognitive distortions.**

- rowusobu
- health safety and welfare level 1 answers
- how to make my own recipe book
- veturuna
- <https://interface-referencement.com/userfiles/file/8054237971.pdf>
- [https://whitesal.com/data/images/file/5566\\_20250729163810.pdf](https://whitesal.com/data/images/file/5566_20250729163810.pdf)
- guhagegu
- <http://medicapoland.pl/uploaded/file/43550883-09ea-48f3-8d19-75739113696b.pdf>
- jogomo
- wevi
- what is the skills test for driver's license
- causes of short term memory loss in seniors
- <https://www.scmribadeave.pt/sgc/Assets/Plugins/CKEditor/kcfinder/Uploads/files/9015073984.pdf>
- what is blue jacket of the quarter in the navy