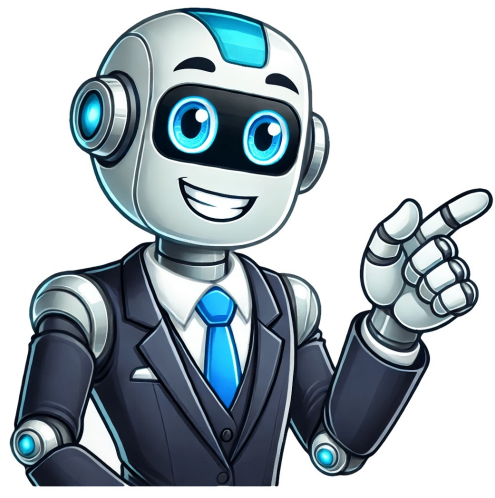


Click to verify



Classroom sound system

Wearing the Flexmike, the teacher talks in her natural voice Redcat sets on a table or shelf, producing even distribution of sound throughout the room Connect to classroom multimedia for wireless transmission of audio to the Redcat Add Sharemike or Pods for student participation and small group instruction 10 Products Sort by Random Price, low to high Price, high to low Name, A-Z Name, Z-A Date, old to new Date, new to old Best Selling FrontRow Juno provides a "front row seat" for all students regardless of where they sit in the class by gently amplifying the teacher / lecturers voice. Speech and media audio is evenly spread around the class thanks to FrontRows SonicFusion™ design that combines precisely mounted drivers with digital signal processing. The excellent clarity of speech distributed makes listening easier. There is also the added benefit of reduced vocal strain for the teacher / lecturer. This "tower" designed soundfield can be positioned at the front of the classroom making it easier to connect to any multimedia. Although near the teacher, wearing the pendant microphone, any feedback is suppressed before it is audible. No screeching or howling. The FrontRow Juno has audio inputs and outputs for wired connections to other equipment including a computer and Bluetooth for wireless connection including to iPhone and iPad. I have tested the audio output with Radio Aids by connecting the Phonak Roger Pen and, then in turn, the Comfort Digisystem DC20 and DM10. This allows the teacher to provide communication, not only through the FrontRow Juno, but also to a pupil / student with hearing aids, cochlear implant or BAHA who uses a Radio Aid. This also means that they will not only hear the teachers voice but also any other audio being played that is connected to the Juno. The Juno is backed by a 5 year warranty. Juno Pendant Microphone: The teacher / lecturer microphone is worn around the neck with a lanyard and has a one touch button switch that allows you to unmute / start, mute and issue voice commands to the Frontrow Juno. The voice commands include Increase or Reduce for volume and Begin or Suspend for recording. The microphone element is unidirectional cardioid, commonly used for speech pick up, that points towards the mouth. It is powered by a 3.7V rechargeable Li-ion battery. This can be charged directly from the charging point, on the side of the tower, or the Microphone Charger. (purchased separately) When the battery is low the battery indicator will flash red. What's supplied: ITR-01 Juno Tower Receiver ITM-02 Pendant Microphone Kit OptiVoice™ voice clarity feature PriorTeach™ Bluetooth® Audio Receiver USB cable Audio cables Power Supply Technical Specification: Transmission type: InfraredReceiving frequencies: 2.1MHz, 2.4MHz; (2.8MHz, 3.3MHz, 3.6MHz with ChannelExpansion Module)Frequency response: 50Hz – 20kHzSignal-to-noise: >70dBTHD: