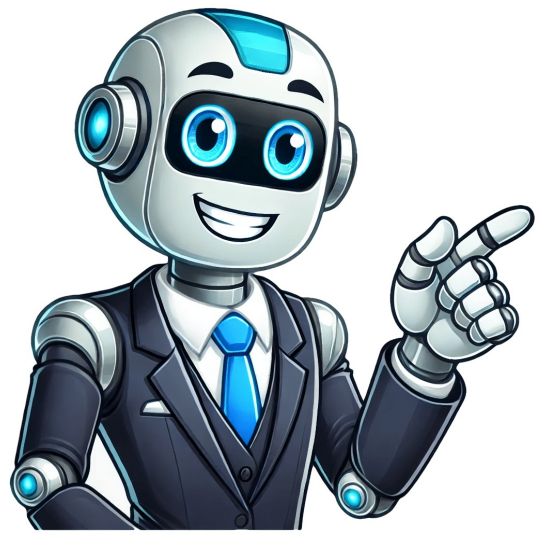


Click to verify



[illegible]

flashing, enter your chosen PIN on the keypad followed by pressing the Up/Down or Enter button. The opener should blink or make a noise to confirm that it has accepted the PIN. See also How to Program Your Ford Garage Door Opener: A Step-by-Step Guide After programming, test the keypad by entering your PIN and pressing the Up/Down button. The garage door should open or close, indicating successful programming. Even with simple programming steps, occasional issues may arise. Below are some common problems and how to troubleshoot them. Check the Batteries: Ensure that the remote control has fresh batteries. Weak or dead batteries are a common cause of failed programming attempts. Repeat the Process: Sometimes the programming process doesn't work on the first attempt. Simply repeat the steps and ensure that you're following the correct timing. Interference: Electronic devices and even metal structures can sometimes interfere with the signal. Move closer to the motor unit and try again. Check Keypad Batteries: Just like the remote, a wireless keypad needs fresh batteries to function properly. Reset the Keypad: If the keypad becomes unresponsive, try resetting it by holding down the Program button for 10 seconds and then reprogramming it. Reprogram After Power Outage: A power outage or surge can occasionally wipe out the keypad programming. Follow the programming steps again to resync the keypad.Adjust Travel Limits: If your garage door doesn't fully open or close, the travel limits may need to be adjusted. Consult your Genie owners manual for instructions on setting the proper travel limits. Check Safety Sensors: Misaligned or blocked safety sensors can prevent the door from closing properly. Ensure that the sensors are clean and facing each other. For those looking to get the most out of their Genie garage door opener, there are several advanced programming features worth exploring: Genies Intellicode rolling code technology enhances security by changing the access code each time the garage door is used. This prevents potential code-grabbing attempts by outsiders. This feature is automatically built into newer Genie models and doesn't require additional programming. If you're going on vacation or want to prevent unauthorized access while you're away, you can activate the Vacation Lock feature. This temporarily disables remote and keypad functionality until the lock is deactivated. You can usually enable this feature via the wall-mounted control console. Many Genie keypads offer the ability to set a temporary PIN for guests, service providers, or family members. This code can be programmed to expire after a certain number of uses or a specific period of time, giving you control over temporary access to your garage. To reset a Genie garage door opener, locate the Learn or Program button on the motor unit and press it for several seconds until the indicator light turns off. This will erase all stored remotes and keypads. You will then need to reprogram your devices. Yes, you can program multiple remotes to the same Genie garage door opener. Simply follow the programming steps for each remote, ensuring that each remote is synced to the motor unit. The frequency of battery replacement depends on how often you use your remote or keypad, but generally, batteries should be replaced every 1 to 2 years for optimal performance. Understanding the Genie garage door opener programming process ensures that you can fully utilize your garage door system, enhancing both convenience and security. Whether you're programming a remote, syncing a keypad, or troubleshooting minor issues, following the simple steps outlined in this guide will allow you to enjoy seamless operation for years to come. By taking the time to properly program your Genie garage door opener, you'll ensure reliable access to your home while keeping your garage secure. With Genies advanced features like Intellicode security and vacation lock modes, you can rest assured that your garage is well-protected against unauthorized access. Programming instructions and tips for programming your vehicles in car remotes system, Homelink to your Genie garage door opener. Published on: January 11, 2022How do I get the remote control built into my car to work with my Genie garage door opener?HomeLink and Car2U are both in-car technologies that allow you to open your garage door from your car. Usually, these 3 buttons are located on your visor or on the ceiling of your car above your center console. The benefit of being able to open your garage door from your car is that you do not need a garage door opener remote. The HomeLink and Car2U systems are powered by your cars electrical system so they do not need batteries, unlike a hand-held garage door opener remote. Genie garage door openers are compatible with both HomeLink and Car2U technologies. Cars equipped with HomeLink have a single LED and usually feature an image of a house at the top middle button. Cars featuring Car2U have 3 LED lights above each of the three buttons.HomeLink Buttons Car2U Buttons DetailedPDF Instructions.Video found here.Step 1: Clear HomeLinkClear HomeLink by pressing and holding down the first and third buttons until the indicator on the HomeLink blinks slow and then fast for 20 seconds; then release both buttons.NOTE: Clearing the HomeLink will remove all previously programmed garage door openers.Step 2: Train HomeLink to the Genie RemoteChoose the button on the HomeLink that will be used to open the door. Hold the Genie remote two inches from the HomeLink button. Hold down the Genie remote button. While holding, press and hold the chosen HomeLink button. Hold down both buttons until the indicator on the HomeLink blinks slow then fast. Once it blinks, release both buttons.Step 3: Program HomeLink to the Genie OpenerFor Newer Genie Garage Door Openers with a Program Button:Press and hold the PROGRAM button on your Genie garage door opener's powerhead until the round blue LED is ON. Release the button. The long purple LED will begin flashing.Press the chosen HomeLink button for two seconds and release. Press that same button again for two seconds and release. The long LED will flash blue and then turn off.Press the HomeLink button a few more times until door moves.For Older Genie Garage Door Openers with a Learn Button:Press and release the learn code button on your Genie garage door opener's powerhead - the red LED will begin to blink.Press the desired HomeLink button one time. The red LED will stop blinking and stay on.Press the desired HomeLink button one more time. The red LED will go out.Pressing the HomeLink button again will cause the garage door to move.NOTE: For additional instructions see the motor vehicle manual, www.homelink.com or visit www.GenieCompany.com Detailed PDF InstructionsStep 1: Clear Car2U to default settings The default setting for the Car2U system is:Button 1 = Genie Manufactured OpenersButton 2 = LiftMaster Manufactured OpenersButton 3 = Wayne Dalton Manufactured OpenersPress and hold buttons 1 and 3 for 20 seconds or until all three LEDs begin to flash.Release both buttons. The Car2U system is now set to the Factory Default settingsNOTE: Clearing the Car2U remote will remove all previously programmed garage door openers.Step 2: Program Car2U to the Genie OpenerFor Newer Genie Models:Press and hold the PROGRAM button on your Genie garage door opener's powerhead until the round blue LED is ON release the button. The long purple LED will begin flashing.Press the designated Genie Car2U button for two seconds and release. Press that same button again for two seconds and release. The long LED will flash blue and then turn off.Press the Car2U button a few times more until door moves.For Older Genie Models:Press and release the learn code button on your Genie garage door opener's powerhead - the red LED will begin to blink.Press the desired Car2U button one time. The red LED will stop blinking and stay on.Press the desired Car2U button one more time. The red LED will go out.Pressing the Car2U button again will cause the garage door to move.Step 3: Changing Factory Default Button for a Genie OpenerPress and hold buttons 1 & 3 for ONE SECOND and releaseall three LEDs will light solid red.Press and hold the button (2 or 3) to change it to Genie the corresponding LED will flash. While continuing to hold that button, press and release button 1. Press and release button 1 again.Release the button being held in step 2 and wait for the LED to stop flashing. This button is now set for Genie. Repeat Step 2 for second Genie Opener.NOTE: For additional help see the motor vehicle manual, learcar2u.com or visit www.GenieCompany.com-image:Pexels

Where is the learn button on a genie pro max garage door opener. Where is the learn button on a genie screw drive garage door opener. Where is the learn button on a genie garage door opener model 7055. Where is the learn button on a genie garage door opener model 7055d. Where is the learn button on a genie model 2128 garage door opener. Where is the learn button on a genie model 1035 garage door opener. Where is the learn button on a genie blue max garage door opener. Where is the learn button on a genie model 2028 garage door opener. Where is the learn button on a genie intellicode garage door opener. Where is the learn button on a genie pro screw drive garage door opener. Where is the learn button on a genie model 3053 garage door opener. Where is the learn code button on a genie garage door opener. Where is the learn button located on a genie garage door opener. Where is the learn button on a genie pro garage door opener. Where is the learn button on a genie 3155d garage door opener.